





## New Orchard park, Victoria Street, Littleport, Cambs, CB6 1LT

£125,000

🛏 2 🚿 1 🛋 1



- Detached Park Home Bungalow
- Modern Fitted Kitchen
- Bedrooms Have Built in Wardrobes
- Sought After Location
- Off Street Parking
- Two Bedrooms (38'x20')
- Enclosed Gardens To All Sides
- Residential Park
- Double Glazing
- NO STAMP DUTY TO PAY!







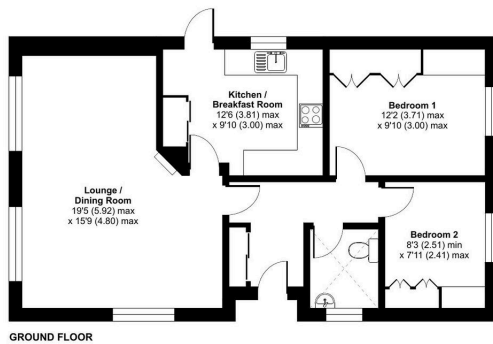
A well presented two bedroom park home bungalow(38'x20') located on this conveniently located residential park for the over 50's. This home has been looked after by the current seller and boasts a separate entrance hall, a dual aspect L-Shaped lounge with feature fireplace, a modern fitted kitchen, two bedroom with both having built in wardrobes and a wet room/shower room compliments the accommodation. There are enclosed and lawned gardens to all sides of the home as well as off street parking near to the home. This is a wonderful home that must be viewed to be fully appreciated.



#### New Orchard Park, Littleport, Ely, CB6

Approximate Area = 712 sq ft / 66.1 sq m

For identification only - Not to scale



Floor plan produced in accordance with RICS Property Measurement 2nd Edition, incorporating International Property Measurement Standards (IPMS2 Residential). © richvecom 2025. Produced for The Park Home Agency Ltd. REF: 1306872



01793 230185  
sales@theparkhomeagency.co.uk

Agents Notes: All measurements are approximate and quoted in metric with imperial equivalents and for general guidance only and whilst every attempt has been made to ensure accuracy, they must not be relied on. The fixtures, fittings and appliances referred to have not been tested and therefore no guarantee can be given that they are in working order. Internal photographs are reproduced for general information and it must not be inferred that any item shown is included with the property. For a free valuation, contact the numbers listed on the brochure