



Clanna Country Park, Alvington, Lydney, Glos, GL15 6AN

£180,000

🛏 2 🚿 2 🛋 1



- Detached Residential Park Home
- Two Double Bedrooms
- Ensuite To The Master Bedroom
- Gardens To All Sides
- Utility Room
- Spacious Lounge and Dining Room
- Fitted, Modern Kitchen
- Sought After Village Location
- Driveway To The Side
- NO STAMP DUTY TO PAY

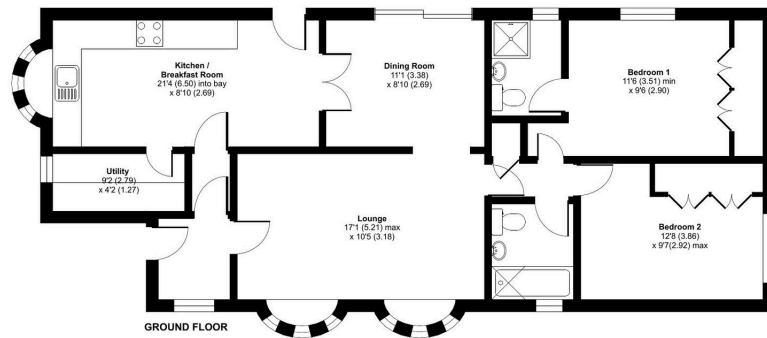


An exceptional detached park home bungalow located on this sought after residential park in a village setting on the edge of the Forest Of Dean. Located at the back of the park with a wooded area to the rear this home offers spacious accommodation including a separate lounge and dining room, a kitchen/breakfast room with utility, two double bedrooms which both have built in wardrobes and the master bedroom having an ensuite shower room and a further guest bathroom compliments these rooms. Externally there is a generous plot with gardens to all sides of the home and offers a high level of privacy and seclusion as well as a driveway to the side with parking for 2 cars. An internal viewing is essential.



Clanna Country Park, Clanna, Alvington, Lydney, GL15

Approximate Area = 938 sq ft / 87.1 sq m
For identification only - Not to scale



Floor plan produced in accordance with RICS Property Measurement 2nd Edition, incorporating International Property Measurement Standards (IPMS2 Residential). © richvecom 2025. Produced for The Park Home Agency Ltd. REF: 1268723



01793 230185

sales@theparkhomeagency.co.uk

Agents Notes: All measurements are approximate and quoted in metric with imperial equivalents and for general guidance only and whilst every attempt has been made to ensure accuracy, they must not be relied on. The fixtures, fittings and appliances referred to have not been tested and therefore no guarantee can be given that they are in working order. Internal photographs are reproduced for general information and it must not be inferred that any item shown is included with the property. For a free valuation, contact the numbers listed on the brochure