



Regency Heights, Blandford Road North, Beacon Hill, Poole, Dorset, BH16 6GH

£260,000

🛏 2 🍳 2 🛋 1



- Detached Park Home Bungalow
- Stylish, Modern Fitted Kitchen
- Main Bedroom with Partitioned Bath Area
- Two Double Bedrooms
- Gardens To All Sides
- Modern Open Plan Design
- Part-Vaulted Ceilings
- Ensuite And Guest Bathroom
- Double Length Driveway
- NO STAMP DUTY TO PAY!

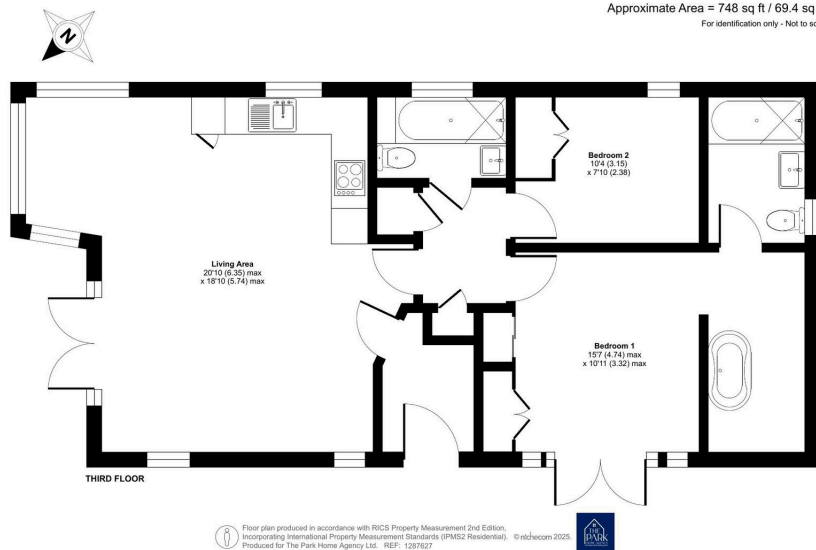


A simply stunning park home bungalow which oozes luxury and quality and is located on an enviable plot on the outskirts of this sought after, gated residential park close to Poole in Dorset. This Wessex 'Summerhouse' home has a modern and stylish twist, offering a spacious and open plan living area with vaulted, beamed ceilings and a fully fitted modern kitchen. The master bedroom has a partitioned area with a bath as well as a further ensuite and guest bathroom! The home has an enclosed, part lawned, part patio garden with a corner plot aspect and a driveway with parking for 2 cars.



Hazel Grove, Regency Living, Blandford Road North, Beacon Hill, Poole, BH16

Approximate Area = 748 sq ft / 69.4 sq m
For identification only - Not to scale



01793 230185
sales@theparkhomeagency.co.uk

Agents Notes: All measurements are approximate and quoted in metric with imperial equivalents and for general guidance only and whilst every attempt has been made to ensure accuracy, they must not be relied on. The fixtures, fittings and appliances referred to have not been tested and therefore no guarantee can be given that they are in working order. Internal photographs are reproduced for general information and it must not be inferred that any item shown is included with the property. For a free valuation, contact the numbers listed on the brochure