



The Grove, Woodside Park, Woodside, Luton, Beds, LU1 4LS

£105,000

🛏 1 🚿 1 🛋 1



- Detached Park Home Bungalow
- One Double Bedroom
- Gas Central Heating
- Re-Fitted Bathroom Suite
- No Onward Chain
- Popular Residential Park
- Double Glazing
- Modern Fitted Kitchen
- Generous Gardens
- Lounge With Fireplace

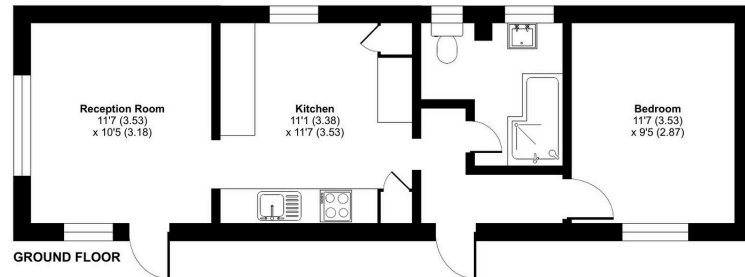


A spacious one double bedroom detached park home bungalow located on this sought after residential park for the over 25's close to Luton. The layout and space within will impress many buyers and it boasts a dual aspect lounge with fireplace, a modern fitted kitchen with some integrated appliances, a double bedroom and a stylish re-fitted bathroom with a shower over the bath. Externally the home has a generous plot which has lawned gardens surrounding the home with mature shrubs to the front and the side. This home is offered with no onward chain.



The Grove, Woodside Park Homes, Woodside, Luton, LU1

Approximate Area = 462 sq ft / 43 sq m
For identification only - Not to scale



Floor plan produced in accordance with RICS Property Measurement 2nd Edition, incorporating International Property Measurement Standards (IPMS2 Residential). © redcom 2025. Produced for The Park Home Agency Ltd. REF: 1266274



01793 230185
sales@theparkhomeagency.co.uk

Agents Notes: All measurements are approximate and quoted in metric with imperial equivalents and for general guidance only and whilst every attempt has been made to ensure accuracy, they must not be relied on. The fixtures, fittings and appliances referred to have not been tested and therefore no guarantee can be given that they are in working order. Internal photographs are reproduced for general information and it must not be inferred that any item shown is included with the property. For a free valuation, contact the numbers listed on the brochure