



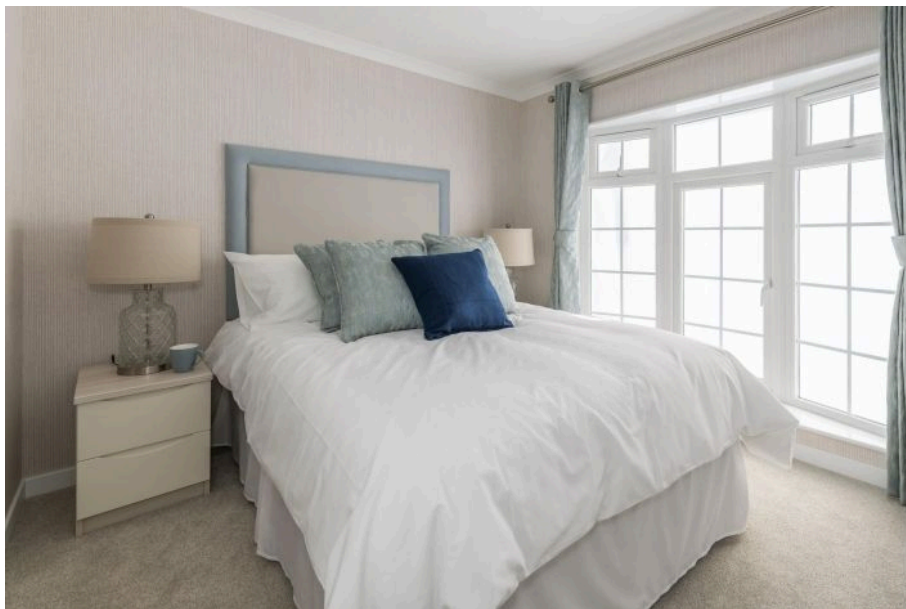
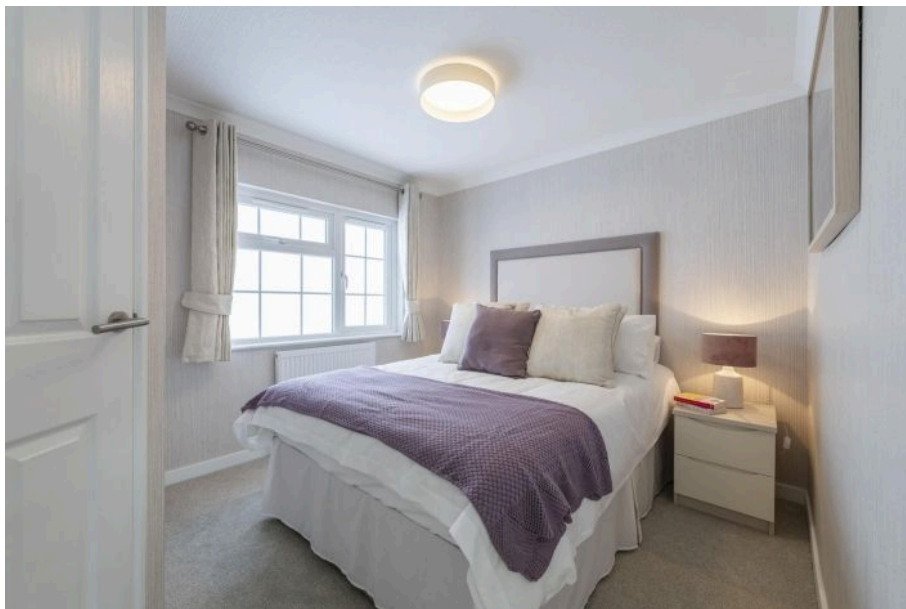
Ranksborough Hall, Langham, Oakham, Rutland, LE15 7EL

£200,000

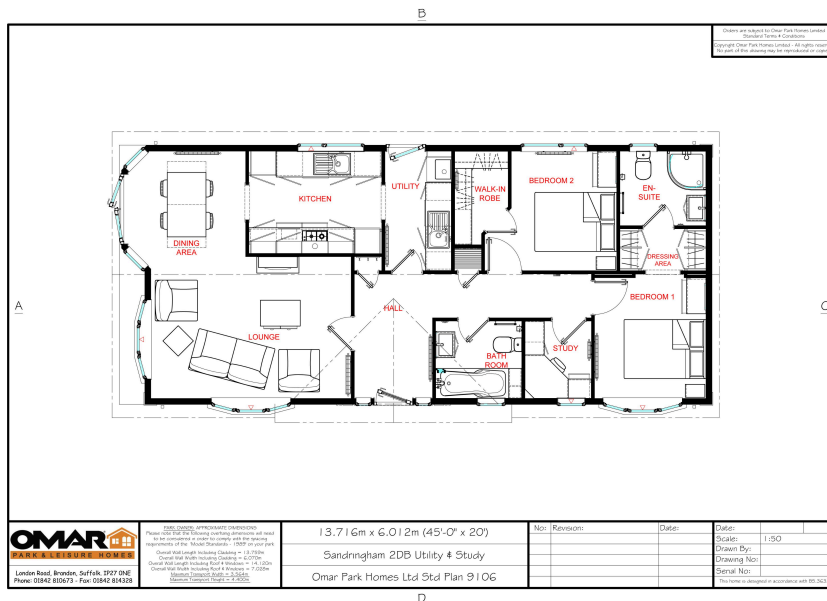
🛏 2 🚿 1 🚿 1



- Detached Park Home Bungalow
- Ensuite To Bedroom 1
- Double Glazing
- Kitchen With Integrated Appliances
- Home Exchange Offered
- Two Double Bedrooms(45'x20')
- L-Shaped Lounge/Dining Room
- Gas Central Heating
- Driveway and Garden
- NO STAMP DUTY TO PAY



A new two double bedroom (45'x20') park home bungalow built by OMAR Park Homes which is located on this popular residential park for the over 50's in a village setting in Rutland. This 'Sandringham' home boasts spacious accommodation and a layout that will appeal to many buyers. This stylish yet traditional interior boasts a spacious L-Shaped lounge/dining room, a kitchen with integrated appliances, a study and the main bedroom has an ensuite shower room and to compliment both bedrooms there is a guest bathroom. Outside there are gardens to all sides of the home and a driveway. This home is sold furnished and is ready to view and purchase NOW!



01793 230185
 sales@theparkhomeagency.co.uk

Agents Notes: All measurements are approximate and quoted in metric with imperial equivalents and for general guidance only and whilst every attempt has been made to ensure accuracy, they must not be relied on. The fixtures, fittings and appliances referred to have not been tested and therefore no guarantee can be given that they are in working order. Internal photographs are reproduced for general information and it must not be inferred that any item shown is included with the property. For a free valuation, contact the numbers listed on the brochure