



Paddock Wood, Tonbridge, Kent, TN12 6NX

£270,000

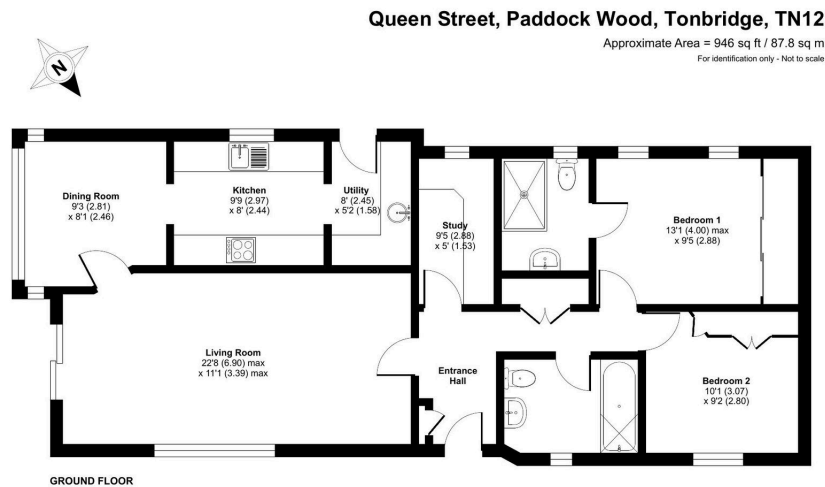
🛏 2 🚿 2 🛋 2



- Detached Park Home Bungalow
- Luxurious 'Windsor' Design
- Lounge and Dining Room
- Study
- NO STAMP DUTY TO PAY
- Gated Residential Park For The Over 50's
- Spacious 50'x20' Home
- Modern Kitchen With Utility
- Ensuite To Master Bedroom
- Superb Position On The Park



A luxurious and stunning two double bedroom (50'x20') park home bungalow located in an enviable position on this sought after residential park for the over 50's in Paddock Wood. The home boasts an entrance hall, part vaulted ceilings, a lounge and dining room, a modern kitchen with integrated appliances and a useful utility room, a study, a spacious ensuite to the master bedroom, air conditioning units in the lounge and master bedroom and there is a further guest bathroom. Externally, the home is located at the back of the park overlooking amenity land and has a Westerly facing patio, enclosed area for a dog and a driveway to the side. This home must be viewed to fully appreciate what it has to offer.



Floor plan produced in accordance with RICS Property Measurement 2nd Edition, incorporating International Property Measurement Standards (IPMS2 Residential). © redcom 2025. Produced for The Park Home Agency Ltd. REF: 1270399



01793 230185
sales@theparkhomeagency.co.uk

Agents Notes: All measurements are approximate and quoted in metric with imperial equivalents and for general guidance only and whilst every attempt has been made to ensure accuracy, they must not be relied on. The fixtures, fittings and appliances referred to have not been tested and therefore no guarantee can be given that they are in working order. Internal photographs are reproduced for general information and it must not be inferred that any item shown is included with the property. For a free valuation, contact the numbers listed on the brochure