



Beech Park Chesham Road, Wigginton, Nr Tring, Herts

£210,000

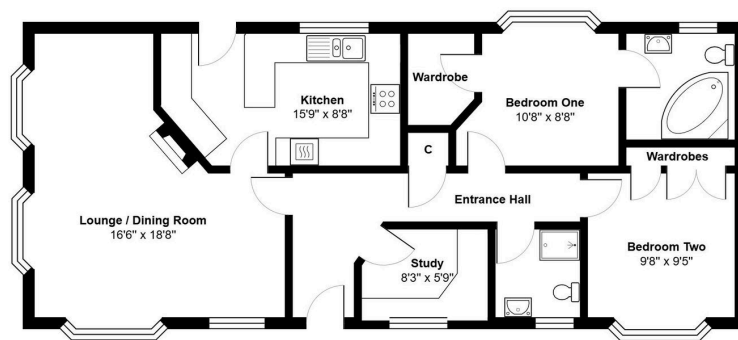
🛏 2 🚿 2 🛋 1



- Detached Park Home Bungalow
- Ensuite Bathroom
- Study
- Gas Central Heating
- L-Shaped Lounge/Dining Room
- Two Double Bedrooms
- Further Guest Shower Room
- Double Glazing
- Spacious Kitchen
- Driveway To The Side



A well presented two double bedroom park home bungalow located close to the heart of this sought after residential park for the over 50's. Situated in a village setting near Tring this home boasts a separate entrance hall, a spacious, dual aspect L-Shaped living/dining room, a kitchen measuring nearly 15' in length with a range of matching wall and base units, a study with built in workstation and chest of drawers, the master bedroom has a walk-in wardrobe and an ensuite bathroom, a double second bedroom with built in wardrobes and a further guest shower room. There is a small, easy to maintain plot with raised flower beds to the rear as well as a brick built shed and double length driveway to one side. This home is offered with no onward chain.



01793 230185
sales@theparkhomeagency.co.uk

Agents Notes: All measurements are approximate and quoted in metric with imperial equivalents and for general guidance only and whilst every attempt has been made to ensure accuracy, they must not be relied on. The fixtures, fittings and appliances referred to have not been tested and therefore no guarantee can be given that they are in working order. Internal photographs are reproduced for general information and it must not be inferred that any item shown is included with the property. For a free valuation, contact the numbers listed on the brochure