





## Willow Way Dolbeare Court, Landrake

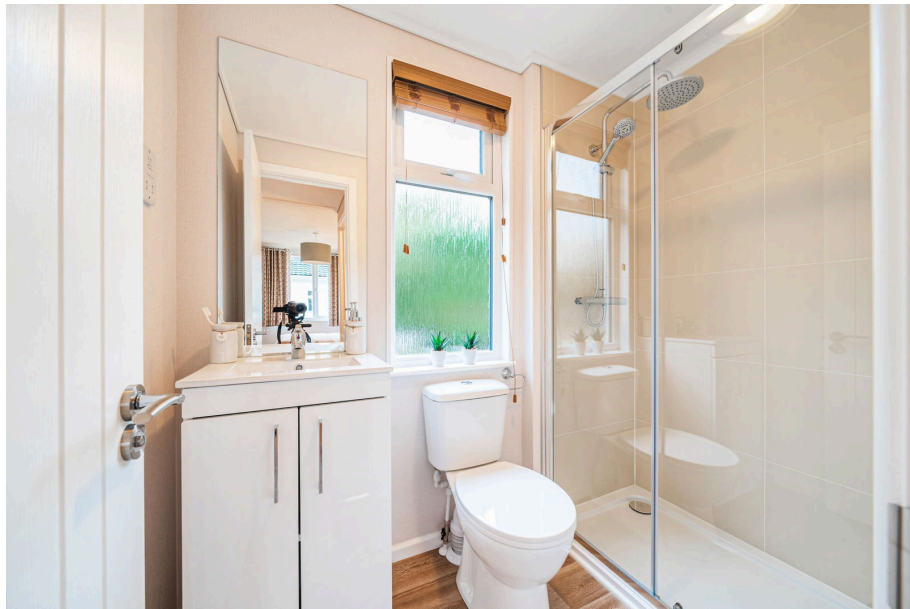
£190,000

🛏 2 🚿 2 🛋 1

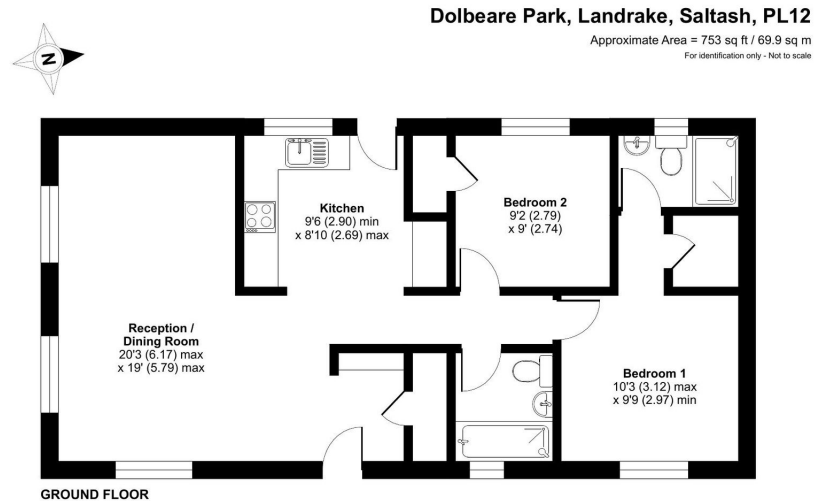


- Detached Park Bungalow
- Two Double Bedrooms
- Luxurious Finish
- Kitchen With Integrated Appliances
- Ready To View NOW!
- Brand New Home
- 'Sonnet' Design 40'x20'
- Ensuite and Guest Bathroom
- Garden and Off Street Parking
- Homes Comes Furnished





Priced for a quick sale! This superb brand new, luxurious two double bedroom park home bungalow is located on a popular residential park for the over 45's set in a countryside setting near Saltash in Cornwall. The home comes furnished and ready to view and purchase now. Located on a corner plot, this two bedroom home boasts a bright and spacious lounge, a modern fitted kitchen with integrated appliances and a dining area, an ensuite to the master bedroom as well as a guest bathroom and both bedrooms have built in wardrobes. Externally there are gardens to all sides of the home as well as a blocked paved driveway to the side.



Floor plan produced in accordance with RICS Property Measurement 2nd Edition, incorporating International Property Measurement Standards (IPMS2 Residential). © nrichcom 2024. Produced for Ambassador Registry Limited. REF: 1214271



01793 230185  
sales@theparkhomeagency.co.uk

Agents Notes: All measurements are approximate and quoted in metric with imperial equivalents and for general guidance only and whilst every attempt has been made to ensure accuracy, they must not be relied on. The fixtures, fittings and appliances referred to have not been tested and therefore no guarantee can be given that they are in working order. Internal photographs are reproduced for general information and it must not be inferred that any item shown is included with the property. For a free valuation, contact the numbers listed on the brochure