



Beech Park, Wigginton, Nr Tring, Hertfordshire, HP23 6JF

£325,000

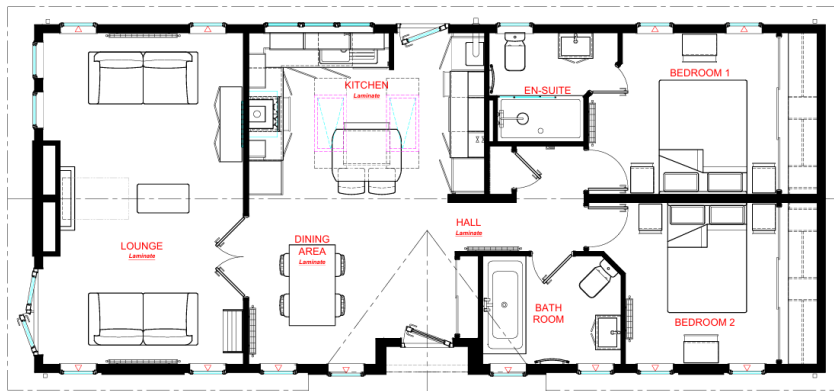
🛏 2 🍳 2 🛋 2



- Brand New Detached Park Home
- Luxurious Finish
- Ensuite To Bedroom One
- Impressive Kitchen
- Superb Plot Position
- OMAR Ikon Design (42'x22')
- Home Comes Furnished
- Two Double Bedrooms
- Garden and Driveway
- Residential Park For The Over 50's



A unique opportunity has arisen to purchase a brand new luxurious park home bungalow on arguably one of the nicest plots on this sought after residential park close to Tring in Hertfordshire. This is an example of the style of home which will occupy the plot but other homes built by OMAR will be available should a buyer prefer a different style. The plot and the position of the home on the park is available to view and the home will be 42'x22' and is able to be reserved. Please contact us for further information.



01793 230185
sales@theparkhomeagency.co.uk

Agents Notes: All measurements are approximate and quoted in metric with imperial equivalents and for general guidance only and whilst every attempt has been made to ensure accuracy, they must not be relied on. The fixtures, fittings and appliances referred to have not been tested and therefore no guarantee can be given that they are in working order. Internal photographs are reproduced for general information and it must not be inferred that any item shown is included with the property. For a free valuation, contact the numbers listed on the brochure