





Camellia Crescent, Oakwood Court, Hogmoor Road, Bordon, Hampshire, GU35

£265,000

🛏 2 🍳 2 🛋 1



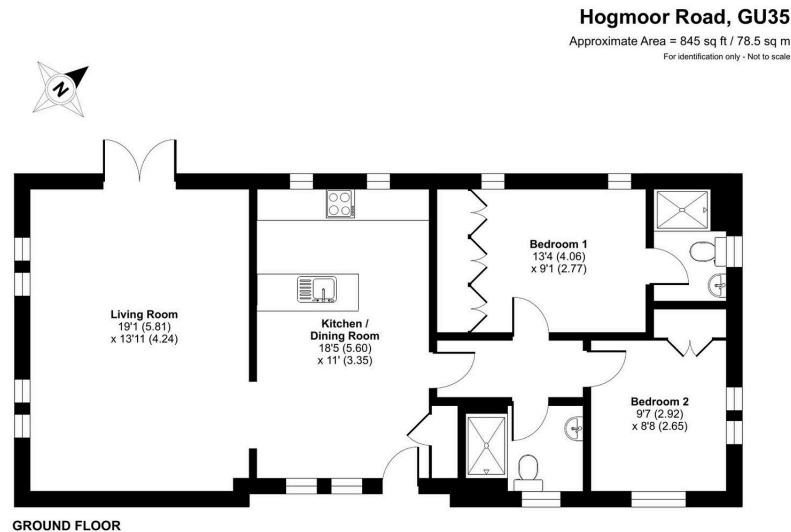
- Luxurious Detached Park Home
- Two Double Bedrooms
- Spacious Lounge
- Vaulted Ceilings
- Double Driveway
- 45'x20' Overstone Design Home
- Ensuite and Further Guest Shower Room
- Kitchen With Integrated Appliances
- Garden And Decked Area
- Gated, Residential Park







A superbly presented, luxurious and modern park home bungalow located on this sought after, gated residential park for the over 45's on the Hampshire/ Sussex border. This 45'x20' 'Overstone' design is spacious and modern and boasts vaulted ceilings, a spacious lounge with doors that open onto a wrap around decked area, a kitchen/dining room with the 'wow' factor which has integrated appliances and ideal for those who like to entertain, two double bedrooms with built in wardrobes, an ensuite to the master bedroom and a further guest shower room. Outside, there is a wrap around decked area, further lawned gardens as well as a driveway to the side with parking for at least two cars. A viewing is essential.



Floor plan produced in accordance with RICS Property Measurement 2nd Edition, incorporating International Property Measurement Standards (IPMS2 Residential). © richcom 2025. Produced for The Park Home Agency Ltd. REF: 1268470



01793 230185  
sales@theparkhomeagency.co.uk

Agents Notes: All measurements are approximate and quoted in metric with imperial equivalents and for general guidance only and whilst every attempt has been made to ensure accuracy, they must not be relied on. The fixtures, fittings and appliances referred to have not been tested and therefore no guarantee can be given that they are in working order. Internal photographs are reproduced for general information and it must not be inferred that any item shown is included with the property. For a free valuation, contact the numbers listed on the brochure