





# Castle Ashby Park, Grendon Road, Earls Barton, Northampton, NN6

£265,000

🛏 2 🍳 2 🛋 2



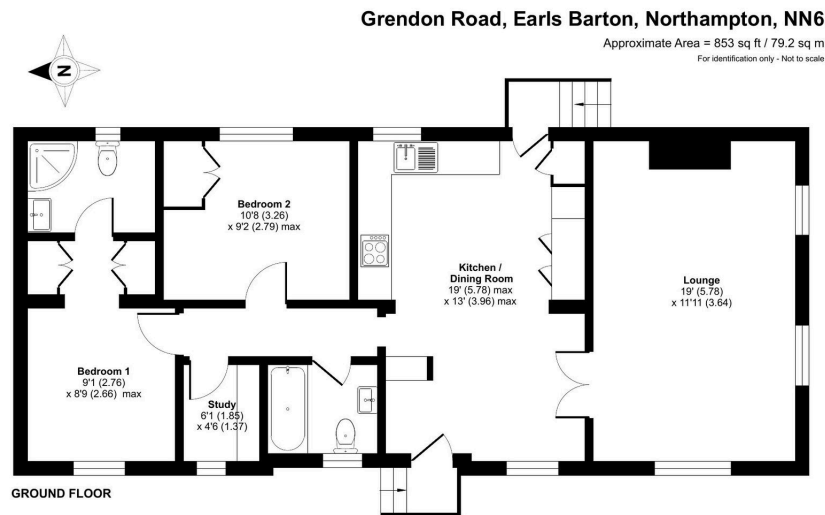
- Detached Park Home Bungalow
- 45'x20 'Image' Design
- Study
- Small Garden and Driveway
- Spacious Interior
- Two Double Bedrooms
- Gated, Secure Residential Park
- En-Suite To Master Bedroom
- Kitchen With Integrated Appliances
- End Of Chain Sale







A superbly presented, pre-owned luxury park home bungalow (45'x20') located on this sought after gated residential park for the over 50's in the Northamptonshire Countryside. With many amenities close by this two double bedroom 'Image' design boasts a dual aspect lounge, a spacious and impressive kitchen/dining room with integrated appliances, a useful study, a master bedroom with built in wardrobes and an ensuite shower room, a double second bedroom with built in wardrobes and a further guest bathroom. Outside, there are garden areas to each side of the home with an enclosed garden area to the side with artificial grass, ideal for those with a dog and a driveway to the side of the home. A viewing is essential.



Floor plan produced in accordance with RICS Property Measurement 2nd Edition, incorporating International Property Measurement Standards (IPMS2 Residential). © redcom 2025. Produced for The Park Home Agency Ltd. REF: 1207039



01793 230185

[sales@theparkhomeagency.co.uk](mailto:sales@theparkhomeagency.co.uk)

Agents Notes: All measurements are approximate and quoted in metric with imperial equivalents and for general guidance only and whilst every attempt has been made to ensure accuracy, they must not be relied on. The fixtures, fittings and appliances referred to have not been tested and therefore no guarantee can be given that they are in working order. Internal photographs are reproduced for general information and it must not be inferred that any item shown is included with the property. For a free valuation, contact the numbers listed on the brochure