



Linton Park Worcester Road, Bromyard

£120,000

🛏 2 🚿 1 🚿 1



- Detached Park Home Bungalow
- Ensuite To The Master Bedroom
- Double Glazing
- Residential Park For The Over 50's
- Driveway To The Side
- Two Double Bedrooms
- Wonderful Countryside Views
- Gas Central Heating
- Close To Local Amenities
- Viewing Recommended



If you are looking for a park home with countryside views then this home should be top of your viewing list! This two double bedroom park home bungalow is located on the outskirts of a popular residential park for the over 50's in Bromyard and has stunning views over countryside to the rear. The home has a spacious lounge/dining room, an ensuite to the master bedroom as well as a guest bathroom, easy to maintain gardens to all sides with a useful storage shed, a driveway to the side as well as a paved rear garden with those wonderful views over the Herefordshire Countryside! A viewing is strongly recommended.



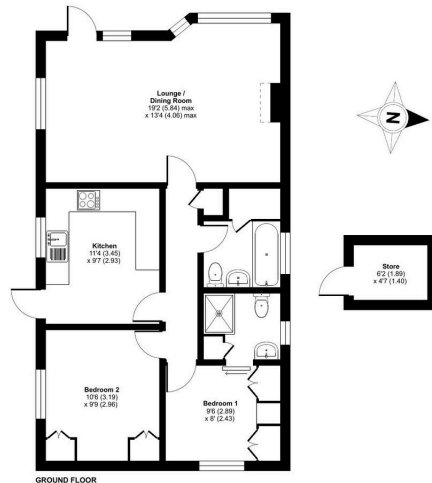
Linton Park, Worcester Road, Bromyard, HR7

Approximate Area = 701 sq ft / 65.1 sq m

Outbuilding = 28 sq ft / 2.6 sq m

Total = 729 sq ft / 67.7 sq m

For identification only - Not to scale



Floor plan produced in accordance with RICS Property Measurement 2nd Edition, incorporating International Property Measurement Standards (IPMS2 Residential). © redcomm 2025. Produced for The Park Home Agency Ltd. REF: 1266323



01793 230185

sales@theparkhomeagency.co.uk

Agents Notes: All measurements are approximate and quoted in metric with imperial equivalents and for general guidance only and whilst every attempt has been made to ensure accuracy, they must not be relied on. The fixtures, fittings and appliances referred to have not been tested and therefore no guarantee can be given that they are in working order. Internal photographs are reproduced for general information and it must not be inferred that any item shown is included with the property. For a free valuation, contact the numbers listed on the brochure