





honeysuckle Way, Meadowlands Court, Poundstock, Near Bude, Cornwall, EX23 0FF

£160,000

🛏 2 🚿 1 🚺 1



- Detached Park Home Bungalow
- Two Bedrooms
- Pemberton Design (42'x14')
- Ensuite Shower Room
- Corner Plot Gardens
- End Of Chain Sale
- Open Plan Living Area
- Double Glazing
- Gas Central Heating
- Driveway





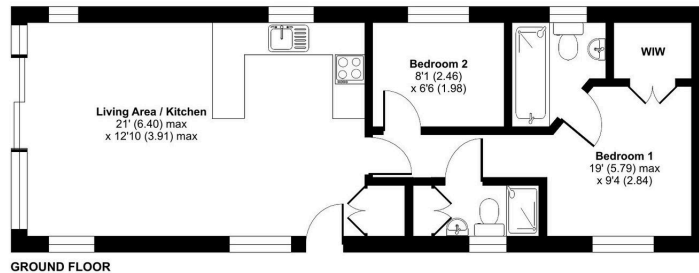


A well presented two bedroom park home bungalow located on a generous corner plot on a popular gated residential park for the over 45's close to the coast near Bude, Cornwall. This 'Rivington' design (42'x14') boasts a light and airy open plan living/kitchen area which has doors that open out onto a decked patio area, a stylish kitchen with integrated appliances, a master bedroom with a walk-in wardrobe and ensuite bathroom as a second bedroom with a built in wardrobe and a further guest shower room. The home is situated on a generous corner plot which affords great views of the countryside with railings to enclose the garden area, ideal for those with dogs and there is a block paved driveway. A viewing is essential.



**Honeysuckle Way, Poundstock, Bude, EX23**

Approximate Area = 551 sq ft / 51.2 sq m  
For identification only - Not to scale



Floor plan produced in accordance with RICS Property Measurement 2nd Edition, incorporating International Property Measurement Standards (IPMS2 Residential). © richvecom 2025. Produced for The Park Home Agency Ltd. REF: 1261074



01793 230185

[sales@theparkhomeagency.co.uk](mailto:sales@theparkhomeagency.co.uk)

Agents Notes: All measurements are approximate and quoted in metric with imperial equivalents and for general guidance only and whilst every attempt has been made to ensure accuracy, they must not be relied on. The fixtures, fittings and appliances referred to have not been tested and therefore no guarantee can be given that they are in working order. Internal photographs are reproduced for general information and it must not be inferred that any item shown is included with the property. For a free valuation, contact the numbers listed on the brochure