



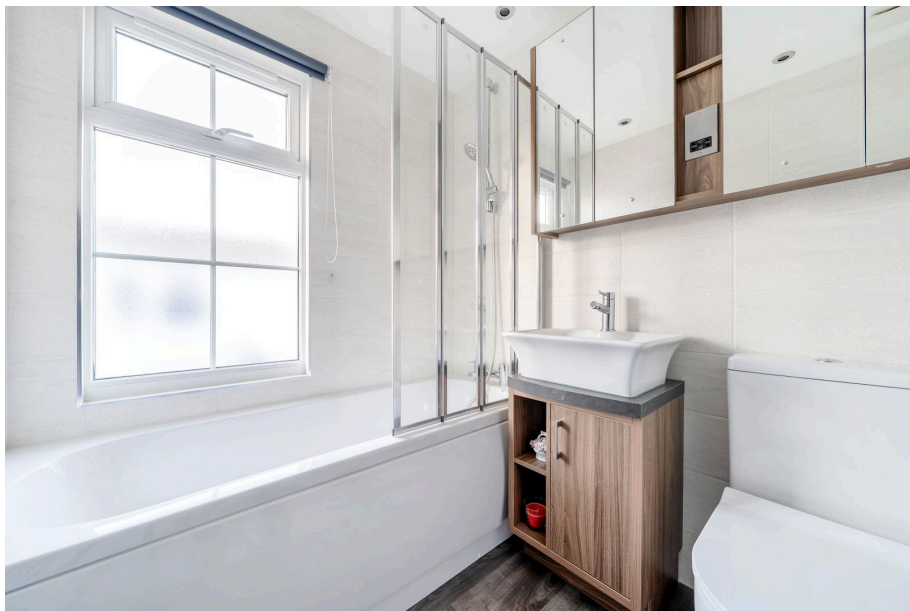
Poundstock, Bude, Cornwall, EX23 0FF

£150,000

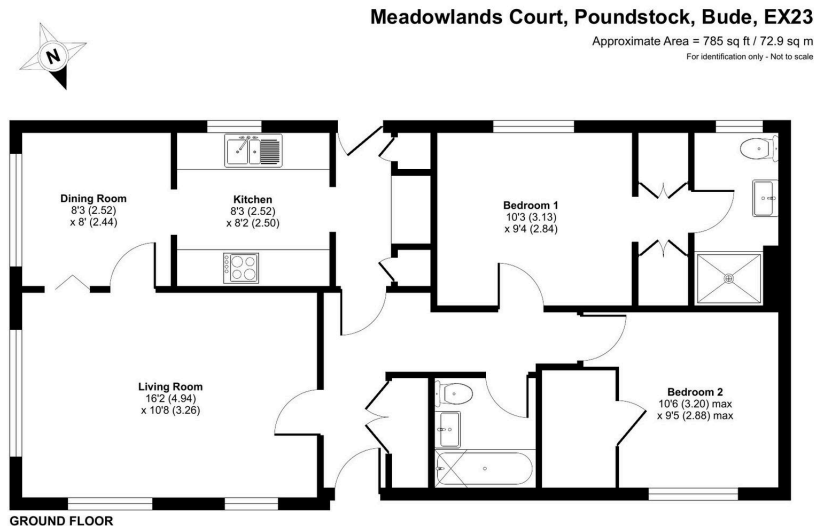
🛏 2 🍳 2 🛋 2



- Detached Park Home Bungalow
- Two Double Bedrooms
- Lounge and Dining Room
- Double Glazing
- Corner Plot With Driveway
- Coastal Location
- Ensuite Shower Room
- Kitchen with Utility Room
- Gas Central Heating
- Decked Patio Area



PRICED FOR A QUICK SALE. A superbly presented two double bedroom park home bungalow located on a corner plot on this popular gated residential park close to the coastal town of Bude. This home not only boasts a separate lounge and dining room but also a separate entrance hall, a kitchen with integrated appliances, a utility room, a master bedroom with a walk-in wardrobe area and ensuite shower room, a second bedroom with built in wardrobes as well as a further guest bathroom, corner plot garden with a decked patio area and off street parking to the side. This home is offered with no onward chain and a viewing is a must!



Floor plan produced in accordance with RICS Property Measurement 2nd Edition, incorporating International Property Measurement Standards (IPMS2 Residential). © richcom 2025. Produced for The Park Home Agency Ltd. REF: 126048



01793 230185
sales@theparkhomeagency.co.uk

Agents Notes: All measurements are approximate and quoted in metric with imperial equivalents and for general guidance only and whilst every attempt has been made to ensure accuracy, they must not be relied on. The fixtures, fittings and appliances referred to have not been tested and therefore no guarantee can be given that they are in working order. Internal photographs are reproduced for general information and it must not be inferred that any item shown is included with the property. For a free valuation, contact the numbers listed on the brochure