



Sparrow Lane, High, Marnham, nr Newark, Notts, NG23 6SH

£135,000

🛏 2 🚿 2 🛋 1



- PRICED FOR A QUICK SALE
- Two Double Bedrooms
- Ensuite Shower Room
- Residential Park For The Over 50's
- Kitchen With Integrated Appliances
- Detached Park Home Bungalow
- Stately Albion 36'x20' Design
- Separate Entrance Hall
- Spacious, Bright Living Room
- Garage and Driveway



JUST REDUCED FOR A QUICK SALE. A stunning two double bedroom(36'x20') park home bungalow located on this exclusive, secure residential park for the over 50's set in a countryside setting. This home is immaculately presented and not only boasts a modern kitchen/dining room with integrated appliances but also a sitting room measuring over 19ft with feature bowed windows, a master bedroom with an ensuite and walk-in wardrobe, a further guest bathroom, garden areas to all sides of the home, driveway to the side with parking for two cars and a garage to the side.



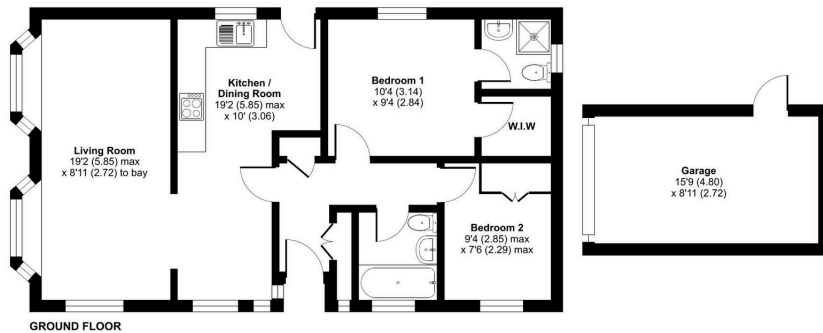
Sparrow Lane, Newark, NG23

Approximate Area = 719 sq ft / 66.8 sq m

Garage = 141 sq ft / 13.1 sq m

Total = 860 sq ft / 79.9 sq m

For identification only - Not to scale



Floor plan produced in accordance with RICS Property Measurement 2nd Edition, incorporating International Property Measurement Standards (IPMS2 Residential). © richvecom 2025. Produced for The Park Home Agency Ltd. REF: 1202913



01793 230185

sales@theparkhomeagency.co.uk

Agents Notes: All measurements are approximate and quoted in metric with imperial equivalents and for general guidance only and whilst every attempt has been made to ensure accuracy, they must not be relied on. The fixtures, fittings and appliances referred to have not been tested and therefore no guarantee can be given that they are in working order. Internal photographs are reproduced for general information and it must not be inferred that any item shown is included with the property. For a free valuation, contact the numbers listed on the brochure