



Stover, Newton Abbott, Devon, TQ12 6FP

£160,000

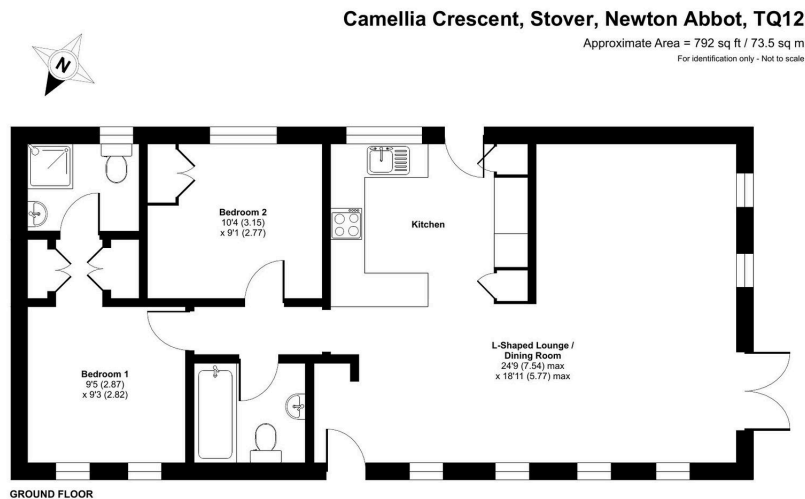
🛏 2 🚽 2 🛋 1



- Detached Park Home Bungalow
- Two Double Bedrooms
- Spacious Living/Dining Room
- Driveway To The Side
- Small Garden with Shed
- Popular 'Newmarket' Design
- Ensuite To The Master Bedroom
- Bright And Airy Throughout
- No Onward Chain
- CASH BUYERS ONLY



A superb two double bedroom detached park home bungalow built by Omar Park Homes located on this popular 12 month Leisure Park for the over 45's near Newton Abbott. For those wanting to be near the Devon coastline, this home and park must be viewed! The home(42'x20') boasts an ensuite and wardrobe area to the master bedroom, a spacious sitting/dining room with large windows, a fitted, modern kitchen with integrated appliances, a further bathroom, easy to maintain gardens and a driveway to the side. Offered with no onward chain, we would recommend a viewing of this home at the earliest convenience.



Floor plan produced in accordance with RICS Property Measurement 2nd Edition, incorporating International Property Measurement Standards (IPMS2 Residential). © richvecom 2025. Produced for The Park Home Agency Ltd. REF: 120314



01793 230185
sales@theparkhomeagency.co.uk

Agents Notes: All measurements are approximate and quoted in metric with imperial equivalents and for general guidance only and whilst every attempt has been made to ensure accuracy, they must not be relied on. The fixtures, fittings and appliances referred to have not been tested and therefore no guarantee can be given that they are in working order. Internal photographs are reproduced for general information and it must not be inferred that any item shown is included with the property. For a free valuation, contact the numbers listed on the brochure