



Stratford Bridge, Ripple, Tewkesbury, GLOS, GL20 6HD

£160,000

🛏 2 🍳 2 🛋 1



- Detached Park Home Bungalow
- Middleton Design 40'x20'
- Ensuite To The Master Bedroom
- Corner Plot Gardens
- Well Presented Accommodation
- Two Double Bedrooms
- Gated, Residential Park
- Kitchen and Utility Room
- Block Paved Driveway
- CASH BUYERS ONLY!

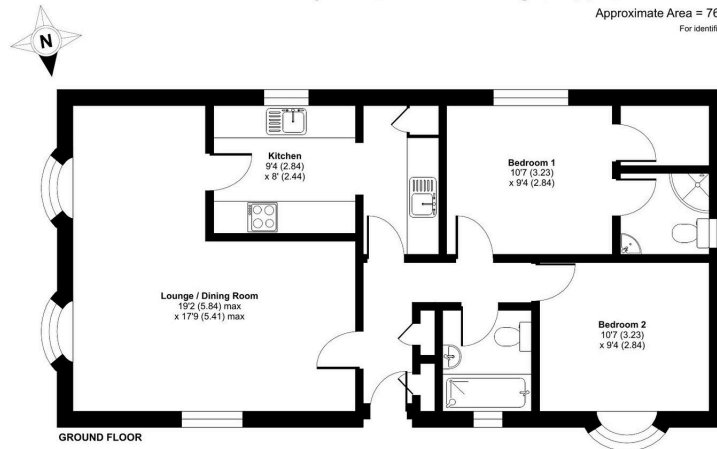


A well presented and well appointed detached park home bungalow(40'x20') which is situated on the outskirts of this sought after, gated residential park for the over 45's. Located on a generous corner plot, this twin dormer home boasts a separate entrance hall, plenty of storage, a dual aspect Lounge/ Dining Room, a modern fitted kitchen with integrated appliances and a utility room, two double bedrooms with the master having an ensuite and walk in wardrobe and there is a further guest bathroom. Outside, there are gardens to all sides of the home with a rear garden which is laid to lawn with a paved patio and a blocked paved driveway to the side and the front giving parking for at least 2 cars. This is a superb home not to be missed!



Cotswold Manor Country Park, Stratford Bridge, Ripple, Tewkesbury, GL20

Approximate Area = 764 sq ft / 71 sq m
For identification only - Not to scale



Floor plan produced in accordance with RICS Property Measurement 2nd Edition, incorporating International Property Measurement Standards (IPMS2 Residential). © richcom 2025. Produced for The Park Home Agency Ltd. REF: 1248974



01793 230185
sales@theparkhomeagency.co.uk

Agents Notes: All measurements are approximate and quoted in metric with imperial equivalents and for general guidance only and whilst every attempt has been made to ensure accuracy, they must not be relied on. The fixtures, fittings and appliances referred to have not been tested and therefore no guarantee can be given that they are in working order. Internal photographs are reproduced for general information and it must not be inferred that any item shown is included with the property. For a free valuation, contact the numbers listed on the brochure