



Regency Court, Stover, Newton Abbott, Devon, TQ12 6EN

£120,000

🛏 2 🍳 2 🛋 1



- Detached Park Home Bungalow
- Luxurious Feel Throughout
- Ensuite and Guest Bathroom
- Impressive Fitted Kitchen
- Double Length Driveway
- Prestige 'Sofia' Design Bungalow
- Two Double Bedrooms
- Decking To The Rear and Side
- Spacious Sitting Room
- CASH BUYERS ONLY!

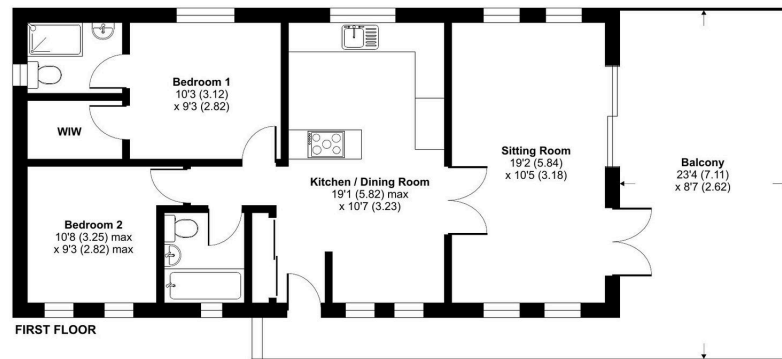


A well presented detached park home bungalow built by Prestige Park Homes which oozes quality throughout and is located on the outskirts of this popular 12-Month Leisure park close to Newton Abbott. This 40'x20' home boasts a bright and airy sitting room with doors leading out onto the decking, an impressive kitchen with integrated appliances, two double bedrooms with the master having an ensuite and walk-in wardrobe and there is a further guest bathroom. Outside, the owners have added a generous decked area to the rear and one side and there is a double length driveway to the side with parking for 2 cars.



Snowdrop Place, Newton Abbot, TQ12

Approximate Area = 757 sq ft / 70.3 sq m
For identification only - Not to scale



Floor plan produced in accordance with RICS Property Measurement 2nd Edition, incorporating International Property Measurement Standards (IPMS2 Residential). © redcomm 2025. Produced for The Park Home Agency Ltd. REF: 1244475



01793 230185

sales@theparkhomeagency.co.uk

Agents Notes: All measurements are approximate and quoted in metric with imperial equivalents and for general guidance only and whilst every attempt has been made to ensure accuracy, they must not be relied on. The fixtures, fittings and appliances referred to have not been tested and therefore no guarantee can be given that they are in working order. Internal photographs are reproduced for general information and it must not be inferred that any item shown is included with the property. For a free valuation, contact the numbers listed on the brochure