



Forest Edge Court, Puddleduck Lane, Great Hockham, IP24 1FQ

£199,950

🛏 2 🍳 2 🛋 1



- Detached Park Home Bungalow
- Two Double Bedrooms
- Modern Fitted Kitchen
- Gated Residential Park
- Driveway
- Sonata Design 40'x20'
- Spacious Lounge/Dining Room
- Ensuite and Guest Bathroom
- Generous Plot
- CASH BUYERS ONLY!

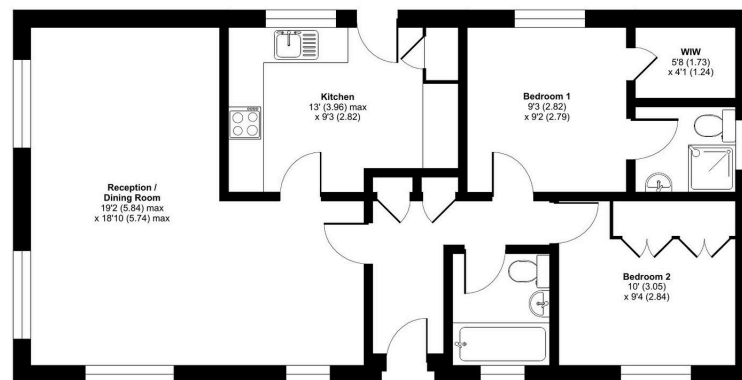


A well presented two double bedroom(40'x20) park home bungalow occupying a generous plot on this sought after, gated residential park for the over 45's. Located in a pleasant rural setting, this home offers spacious accommodation including an L-Shaped Lounge/Dining Room, a modern kitchen with integrated appliances, two double bedrooms with the master having an ensuite shower room and a walk in wardrobe and there is a further guest bathroom to compliment this. There are lawned gardens to all sides of the home with a useful storage shed and a driveway to the front.



Cherry Blossom Drive, Forest Edge Court, Great Hockham, Thetford, IP24

Approximate Area = 760 sq ft / 70.6 sq m
For identification only - Not to scale



GROUND FLOOR

Floor plan produced in accordance with RICS Property Measurement 2nd Edition, incorporating International Property Measurement Standards (IPMS2 Residential). © richcom 2025. Produced for The Park Home Agency Ltd. REF: 1241944



01793 230185
sales@theparkhomeagency.co.uk

Agents Notes: All measurements are approximate and quoted in metric with imperial equivalents and for general guidance only and whilst every attempt has been made to ensure accuracy, they must not be relied on. The fixtures, fittings and appliances referred to have not been tested and therefore no guarantee can be given that they are in working order. Internal photographs are reproduced for general information and it must not be inferred that any item shown is included with the property. For a free valuation, contact the numbers listed on the brochure