



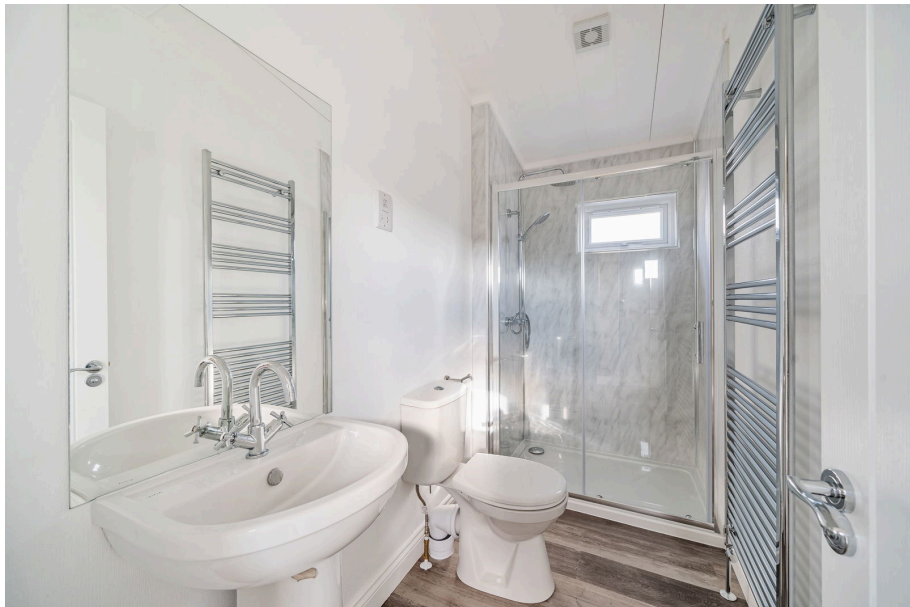
Near Woolacombe Bay, Devon, EX34 7FH

£150,000

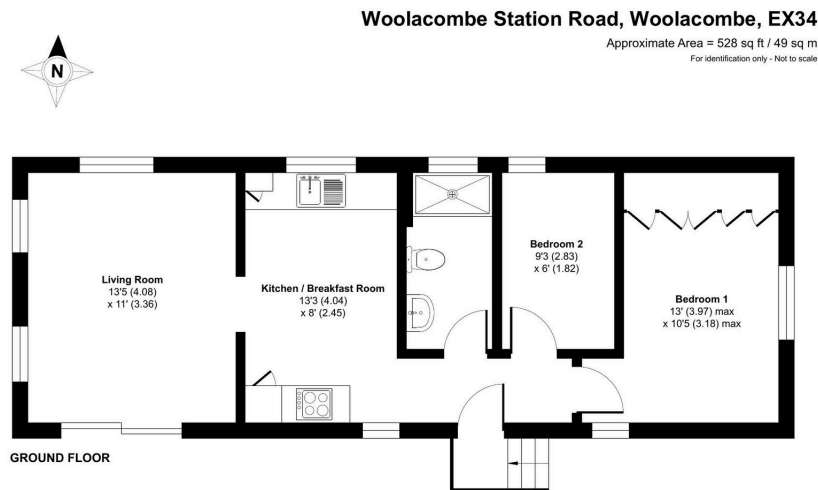
🛏 2 🚿 1 🛋 1



- New Detached Park Home Bungalow
- 'Cosgrove' Design (40'x14')
- Corner Plot with Elevated Position
- Coastal Views
- New Decked Patio Area Fitted
- Two Bedrooms
- Home Comes Furnished
- Fitted Kitchen With Integrated Appliances
- Popular Residential Park
- Priced For a Quick Sale!



A new stunning two bedroom park home bungalow(40'x14') built by Tingdene that occupies an elevated, corner plot on this sought after residential park on the North Devon coast. Views from this park are stunning and this home not only comes fully furnished and ready to move in to but the layout and accommodation will suit many buyers. There is a light and airy lounge with dual aspect windows and doors, a modern, fitted kitchen with integrated appliances, one double bedroom with built in wardrobes, a further single second bedroom and a modern, sleek shower room compliments the home. There are corner plot gardens ready for a buyer to make it their own and the seller has added a new decked area off the lounge and there is also off street parking. A Viewing is essential.



Floor plan produced in accordance with RICS Property Measurement 2nd Edition, incorporating International Property Measurement Standards (IPMS2 Residential). © richvecom 2025. Produced for The Park Home Agency Ltd. REF: 1234105



01793 230185
sales@theparkhomeagency.co.uk

Agents Notes: All measurements are approximate and quoted in metric with imperial equivalents and for general guidance only and whilst every attempt has been made to ensure accuracy, they must not be relied on. The fixtures, fittings and appliances referred to have not been tested and therefore no guarantee can be given that they are in working order. Internal photographs are reproduced for general information and it must not be inferred that any item shown is included with the property. For a free valuation, contact the numbers listed on the brochure