



Newport Road, Albrighton, Wolverhampton, West Midlands, WV7 3NA

£132,500

🛏️ 2 🚿 2 🛋️ 1



- Detached Park Home Bungalow
- Two Double Bedrooms
- Lounge and Dining Area
- Double Glazing
- Garden and Driveway
- Residential Park Close To Amenities
- Ensuite And Walk-in Wardrobe
- Fitted Kitchen with Utility Room
- Main Gas Central Heating
- CASH BUYERS ONLY

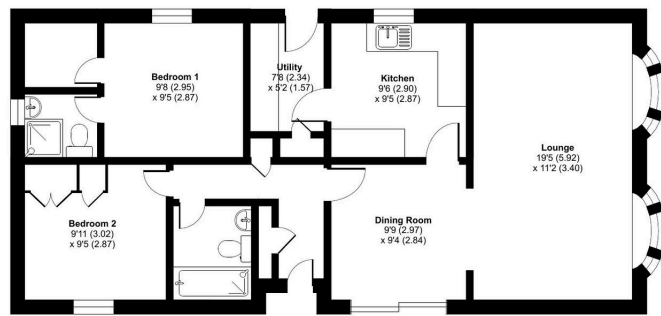


PRICED FOR A QUICK SALE...A well presented and spacious park home bungalow located on this sought after and conveniently located residential parks for the over 55's. This two double bedroom 'Balmoral' design offers a layout that will impress many buyers and internally the home boasts a separate entrance hall, a spacious lounge, dining area, a modern fitted kitchen with a utility room, a master bedroom with an ensuite and walk-in wardrobe, a second double bedroom with built in wardrobes, a further guest bathroom as well as double glazing and gas central heating. To the exterior, there are gardens to all sides of the home with a rear garden with mature hedging, is mainly laid to lawn and there is a driveway to the side of the home.



Newport Road, Albrighton, Wolverhampton, WV7

Approximate Area = 831 sq ft / 77.2 sq m
For identification only - Not to scale



GROUND FLOOR



Floor plan produced in accordance with RICS Property Measurement Standards incorporating International Property Measurement Standards (IPMS Residential). ©indream2024. Produced for The Park Home Agency Ltd. REF: 1202552



01793 230185

sales@theparkhomeagency.co.uk

Agents Notes: All measurements are approximate and quoted in metric with imperial equivalents and for general guidance only and whilst every attempt has been made to ensure accuracy, they must not be relied on. The fixtures, fittings and appliances referred to have not been tested and therefore no guarantee can be given that they are in working order. Internal photographs are reproduced for general information and it must not be inferred that any item shown is included with the property. For a free valuation, contact the numbers listed on the brochure