





# Chalfont St.Peter, Gerrards Cross, Buckinghamshire, SL9

£259,000

🛏️ 2 🚿 2 🚪 1



- Detached Park Home Bungalow
- Two Double Bedrooms
- Study
- Residential Park For The Over 45's
- End Of Chain Sale
- OMAR 45'x20' Home
- Ensuite Bathroom To The Master Bedroom
- Double Glazing
- Garage and Driveway
- Gardens To Three Sides





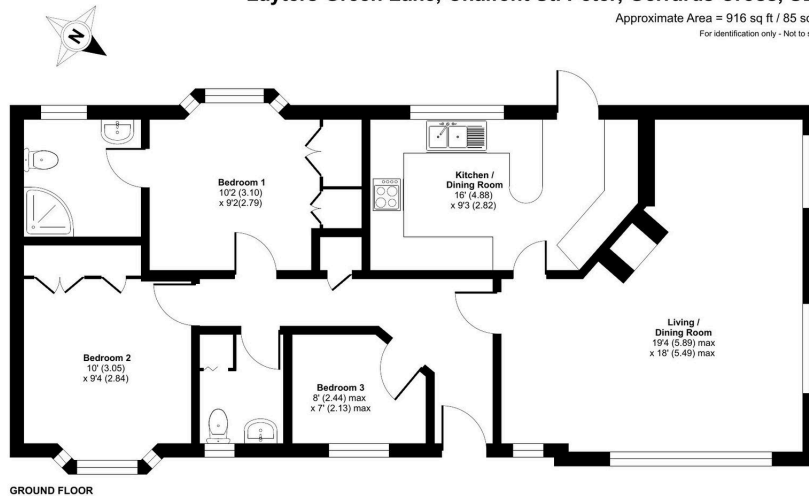


A stunning two double bedroom detached park home bungalow located on this select, sought after residential park for the over 45's. This home (45'x20) offers spacious accommodation including an L-Shaped lounge/dining room, a kitchen/breakfast room, a study, master bedroom with an ensuite bathroom with corner bath, a further guest shower room, gas central heating and double glazing. Externally this home boasts easy to maintain garden areas to three sides of the home as well as a garage and a further parking space. This home must be viewed to fully appreciate its location and what it has to offer.



**Layers Green Lane, Chalfont St. Peter, Gerrards Cross, SL9**

Approximate Area = 916 sq ft / 85 sq m  
For identification only - Not to scale



Certified Property Measure  
Floor plan produced in accordance with RICS Property Measurement Standards incorporating International Property Measurement Standards (IPMS Residential). ©indream2024. Produced for The Park Home Agency Ltd. REF: 1160582



01793 230185  
sales@theparkhomeagency.co.uk

Agents Notes: All measurements are approximate and quoted in metric with imperial equivalents and for general guidance only and whilst every attempt has been made to ensure accuracy, they must not be relied on. The fixtures, fittings and appliances referred to have not been tested and therefore no guarantee can be given that they are in working order. Internal photographs are reproduced for general information and it must not be inferred that any item shown is included with the property. For a free valuation, contact the numbers listed on the brochure