



# 15a The Silent Woman Park, Moorshop

£180,000

🛏️ 2 🚿 2 🚻 1



- Residential Park For The Over 50's
- Superb Countryside Location
- Bus Stop Outside The Park
- Detached Park Home Bungalow
- Modern, Open Plan Living Area
- Fitted Kitchen With Integrated Appliances
- Double Glazing
- Gas Central Heating
- Gardens With Wooded Area To The Rear
- Off Street Parking

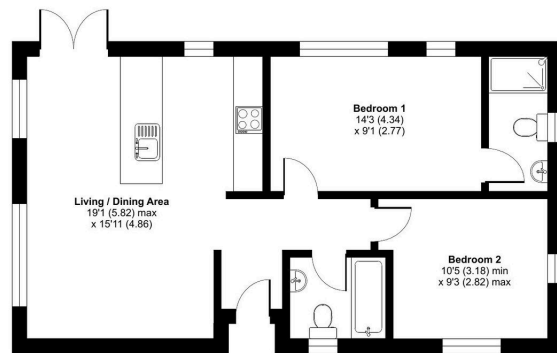


A superbly presented two double bedroom park home bungalow located on this popular, small residential park for the over 45's. This home must be viewed to fully appreciate what it has to offer and there is a 19ft Living Area, a modern fitted kitchen with integrated appliances, two double bedrooms with the master bedroom having an ensuite shower room and this is complimented by a guest bathroom. Externally, there are gardens to all sides and an enclosed rear garden which backs onto a wooded area giving a private and secluded feeling as well as off street parking.



**Tavistock, PL19**

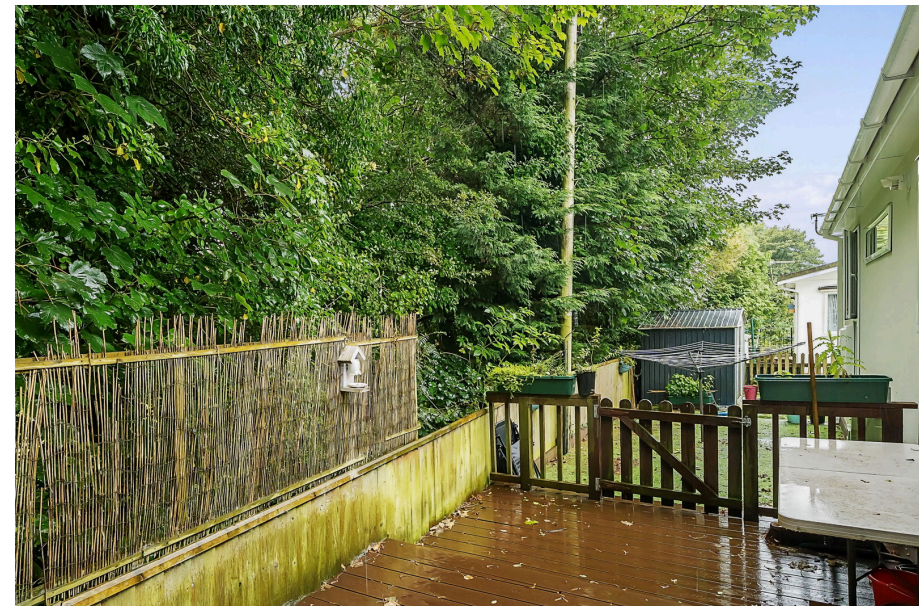
Approximate Area = 666 sq ft / 61.9 sq m  
For identification only - Not to scale



GROUND FLOOR



Floor plan produced in accordance with RICS Property Measurement Standards incorporating International Property Measurement Standards (IPMS2 Residential). ©indream2024. Produced for The Park Home Agency Ltd. REF: 1181416



01793 230185

sales@theparkhomeagency.co.uk

Agents Notes: All measurements are approximate and quoted in metric with imperial equivalents and for general guidance only and whilst every attempt has been made to ensure accuracy, they must not be relied on. The fixtures, fittings and appliances referred to have not been tested and therefore no guarantee can be given that they are in working order. Internal photographs are reproduced for general information and it must not be inferred that any item shown is included with the property. For a free valuation, contact the numbers listed on the brochure