



Nine Mile Ride, Finchampstead, Wokingham, Berkshire, RG40

£135,000

🛏️ 2 🚿 1 🚗 1



- Two Bedroom Park Home Bungalow
- Sought After Residential Park
- Countryside and Woodland Walks Close by
- Ensuite and Walk-in Dressing Room
- Bright Open Plan Living Area
- Generous Plot
- Gardens To All Sides
- Long Driveway
- End Of Chain Sale
- Well Maintained Order Throughout

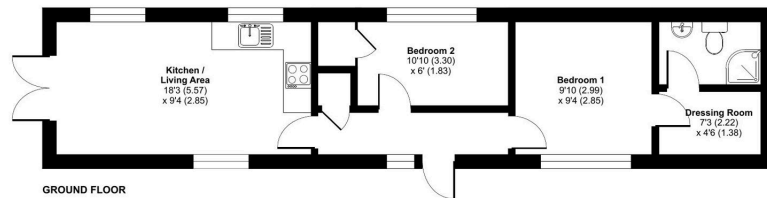


A well maintained detached park home bungalow situated on this popular, gated residential park for the over 45's close to California Country Park. This home should be viewed internally to appreciate what it has to offer and is situated on a generous plot and internally boasts a bright, open plan living area, there are two double bedrooms of which the master has an ensuite and walk-in wardrobe, double glazing and gas central heating. To the outside there is plenty of garden areas to keep a keen gardener happy as well as a driveway with parking for 2 cars. Please see the video or full description for more information.



Finchampstead, Wokingham, RG40

Approximate Area = 481 sq ft / 44.6 sq m
For identification only - Not to scale



GROUND FLOOR



Floor plan produced in accordance with RICS Property Measurement Standards incorporating International Property Measurement Standards (IPMS2 Residential). ©indream2024. Produced for The Park Home Agency Ltd. REF: 1166219



01793 230185

sales@theparkhomeagency.co.uk

Agents Notes: All measurements are approximate and quoted in metric with imperial equivalents and for general guidance only and whilst every attempt has been made to ensure accuracy, they must not be relied on. The fixtures, fittings and appliances referred to have not been tested and therefore no guarantee can be given that they are in working order. Internal photographs are reproduced for general information and it must not be inferred that any item shown is included with the property. For a free valuation, contact the numbers listed on the brochure