



Plot 15, OMAR Newmarket, Near Shepton Mallet, Somerset, BA4 4LY

£185,000

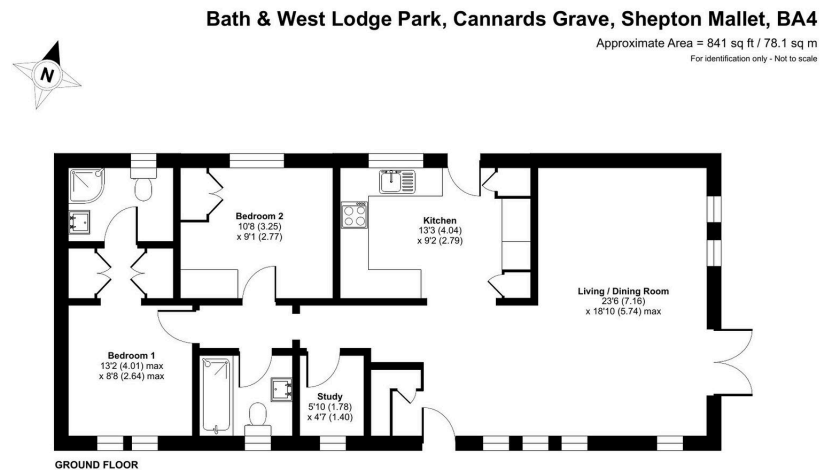
🛏️ 2 🍳 1 🛋️ 1



- Two Double Bedroom Park Home Bungalow
- Brand New Home
- Gardens To All Sides
- Gas Central Heating
- Ensuite and Walk-in Wardrobe
- 45'x20' Newmarket Design Home Bungalow
- Fully Furnished
- Double Glazing
- Study
- Available to View and Buy NOW!



A stunning brand new two double bedroom(45'x20') park home bungalow located on this select, gated development with stunning countryside views. This holiday park is open 365 days/ 12 months of the year and the homes are generously spaced apart and this home is one of a limited number of show homes available to view and purchase immediately. This 'Image' design is built by OMAR Park homes and boasts a generous lounge, Kitchen with integrated appliances, a spacious living room, a study, two double bedrooms with the master having an ensuite shower room and walk in wardrobe, a further bathroom and there is double glazing and gas central heating. Externally there is garden areas to all sides and two parking spaces to the side of the home and the option to add a decking area to each home(at an additional cost).



Certified Property Measure
 Floor plan produced in accordance with RICS Property Measurement Standards incorporating International Property Measurement Standards (IPMS) Residential. © Gridrecm 2024.
 Produced for The Park Home Agency Ltd. REF: 1164602



01793 230185
sales@theparkhomeagency.co.uk

Agents Notes: All measurements are approximate and quoted in metric with imperial equivalents and for general guidance only and whilst every attempt has been made to ensure accuracy, they must not be relied on. The fixtures, fittings and appliances referred to have not been tested and therefore no guarantee can be given that they are in working order. Internal photographs are reproduced for general information and it must not be inferred that any item shown is included with the property. For a free valuation, contact the numbers listed on the brochure