



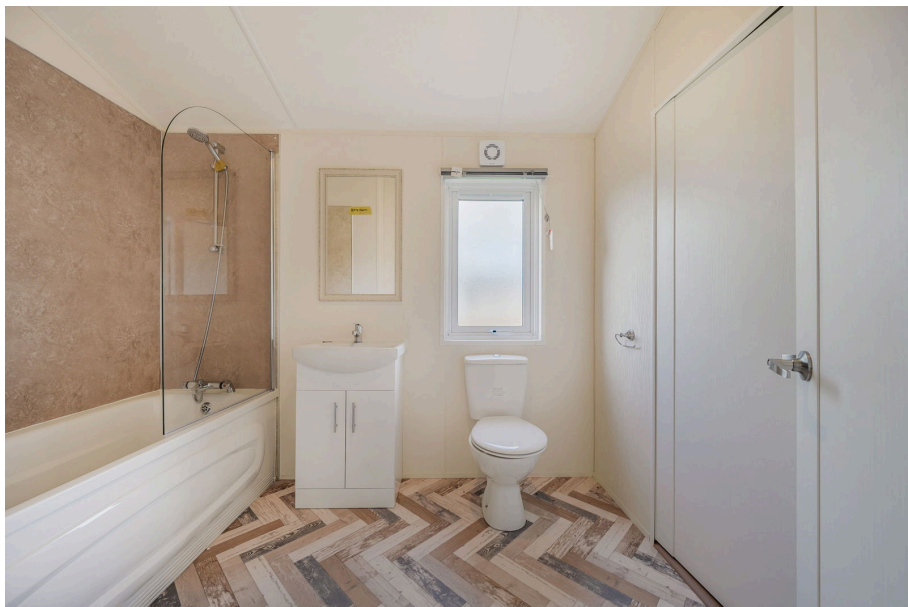
Plot 11 Delta Countryside, Near Shepton Mallet, Somerset, BA4 4LY

£165,000

🛏️ 2 🚿 1 🚗 1



- Brand New 40'x20' Lodge
- Two Double Bedrooms
- Walk-in Wardrobe
- Spacious Open Plan Living Area
- Kitchen With Integrated Appliances
- Double Glazing
- Gas Central Heating
- Garden Area To All Sides
- Two Parking Spaces
- Available to View and Buy NOW!

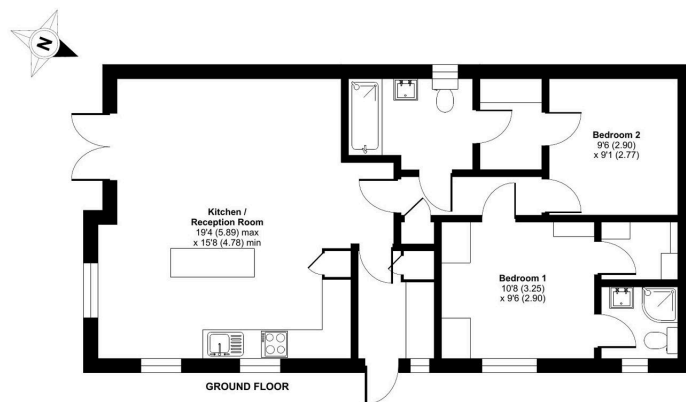


A stunning brand new two bedroom (40'x20') lodge located on this select, gated development with stunning countryside views. This holiday park is open 365 days/12 months of the year and the homes are generously spaced apart and this home is one of a limited number of show homes available to view and purchase immediately. This 'Countryside' design is built by Delta and boasts fully furnished accommodation including a living area, U-Shaped modern kitchen with integrated fridge and freezer and free standing oven and hob with a cooker hood over, two bedrooms with both bedrooms having built in wardrobes and storage cupboards, a modern fitted bathroom and there is double glazing and gas central heating. Externally there is garden areas to all sides and two parking spaces to the side of the home and the option to add a decking area to each home(at an additional cost).



Bath & West Lodge Park, Cannards Grave, Shepton Mallet, BA4

Approximate Area = 776 sq ft / 72.1 sq m
For identification only - Not to scale



Floor plan produced in accordance with RICS Property Measurement Standards incorporating International Property Measurement Standards (IPMS Residential). ©indream2024. Produced for The Park Home Agency Ltd. REF: 1164604



01793 230185

sales@theparkhomeagency.co.uk

Agents Notes: All measurements are approximate and quoted in metric with imperial equivalents and for general guidance only and whilst every attempt has been made to ensure accuracy, they must not be relied on. The fixtures, fittings and appliances referred to have not been tested and therefore no guarantee can be given that they are in working order. Internal photographs are reproduced for general information and it must not be inferred that any item shown is included with the property. For a free valuation, contact the numbers listed on the brochure