



Plot 1/13 Delta Langford, Near Shepton Mallet, Somerset, BA4 4LY

£125,000

🛏️ 2 🍽️ 1 🚗 1



- Brand New Park Lodge
- Two Bedrooms
- Built in Wardrobes in both bedrooms
- Double Glazing
- Modern Fitted Kitchen
- Double Glazing
- Gas Central Heating
- Garden Areas To All Sides
- Two Parking Spaces
- Fully Furnished Home

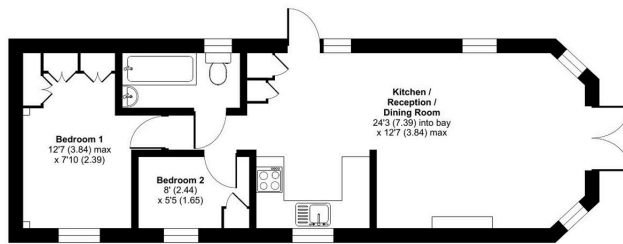


A stunning brand new two bedroom(40'x13') lodge located on this select, gated development with stunning countryside views. This holiday park is open 365 days/12 months of the year and the homes are generously spaced apart and this home is one of a limited number of show homes available to view and purchase immediately. This 'Langford' design is built by Delta and boasts fully furnished accommodation including a living area, U-Shaped modern kitchen with integrated fridge and freezer and free standing oven and hob with a cooker hood over, two bedrooms with both bedrooms having built in wardrobes and storage cupboards, a modern fitted bathroom and there is double glazing and gas central heating. Externally there is garden areas to all sides and two parking spaces to the side of the home and the option to add a decking area to each home(at an additional cost).



Cannards Grave, Shepton Mallet, BA4

Approximate Area = 507 sq ft / 47.1 sq m
For identification only - Not to scale



GROUND FLOOR

 **Certified Property Measurer** Floor plan produced in accordance with RICS Property Measurement Standards incorporating International Property Measurement Standards (IPMS Residential). ©indream 2024. Produced for The Park Home Agency Ltd. REF: 1168442 



01793 230185

sales@theparkhomeagency.co.uk

Agents Notes: All measurements are approximate and quoted in metric with imperial equivalents and for general guidance only and whilst every attempt has been made to ensure accuracy, they must not be relied on. The fixtures, fittings and appliances referred to have not been tested and therefore no guarantee can be given that they are in working order. Internal photographs are reproduced for general information and it must not be inferred that any item shown is included with the property. For a free valuation, contact the numbers listed on the brochure