





West Clayton, Huddersfield, West Yorkshire, HD8

£150,000

🛏 2 🍽 1 🛋 1



- Residential Park For The Over 45's
- Prestige Sonata Design
- Spacious Lounge With Dining Area
- Modern Bathroom Suite
- Off Street Parking
- Detached Park Home Bungalow
- Two Double Bedrooms
- Modern, Fitted Kitchen Area
- Double Glazing
- Garden Areas





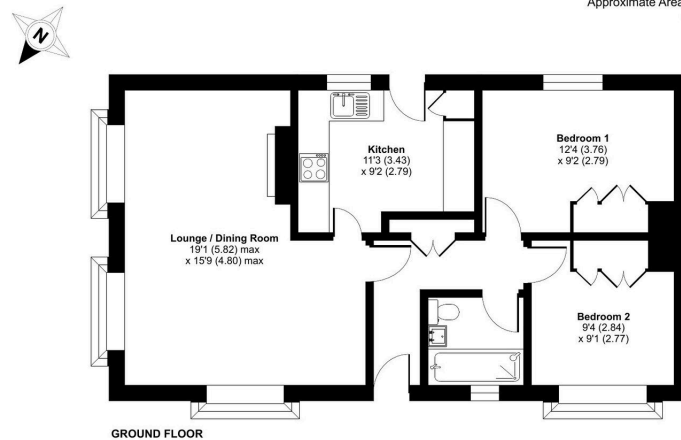


A stunning two double bedroom detached park home bungalow situated on a gated residential park for the over 45's in the West Yorkshire countryside. This 'Sonata' design boasts a modern yet traditional layout and design which will be appealing to many buyers. Internally the home boasts a separate entrance hall, a spacious lounge/dining room, a modern fitted kitchen, two double bedrooms with built in wardrobes and there is a further modern bathroom. Externally there are easy to maintain garden areas to all sides of the home and off street parking. A viewing of this home is essential!



**Earths Wood Country Park, Bank End Lane, Clayton West, Huddersfield, HD8**

Approximate Area = 695 sq ft / 64.6 sq m  
For identification only - Not to scale



 **Certified Property Measurement**  
Floor plan produced in accordance with RICS Property Measurement Standards incorporating International Property Measurement Standards (IPMS2 Residential). ©vidrecom 2024.  
Produced for The Park Home Agency Ltd. REF: 1162112 



01793 230185  
sales@theparkhomeagency.co.uk

Agents Notes: All measurements are approximate and quoted in metric with imperial equivalents and for general guidance only and whilst every attempt has been made to ensure accuracy, they must not be relied on. The fixtures, fittings and appliances referred to have not been tested and therefore no guarantee can be given that they are in working order. Internal photographs are reproduced for general information and it must not be inferred that any item shown is included with the property. For a free valuation, contact the numbers listed on the brochure