



Northchurch, Nr Berkhamsted, Hertfordshire, HP4

Guide Price £255,000

🛏 2 🚿 1 🚗 1



- Detached Park Home Bungalow
- Outstanding Location
- Two Bedrooms
- Gas Central Heating
- Off Street Parking
- Sought After Residential Park
- Views Towards Countryside To The Rear
- Double Glazing
- Decked Patio AND Rear Garden
- End Of Chain Sale!

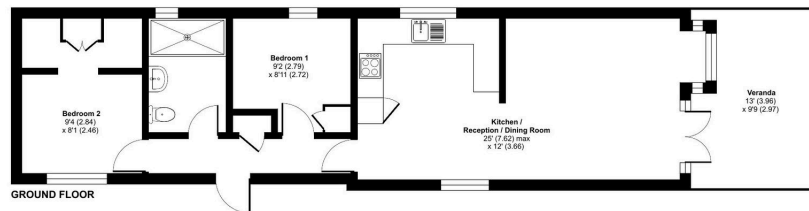


This stunning home is a well presented two bedroom park home bungalow (52'x13') situated on this sought after residential park in near Berkhamsted. The 'Hayden Classic' design is popular amongst park home residents and boasts walk in wardrobes in the main bedroom, spacious shower room, a modern fitted kitchen/dining with integrated appliances as well as a lounge with focal fireplace with double glazed doors leading out to a decked patio with views over the Hertfordshire countryside. Offered with no onward chain, this home is available to view now!



Meadow Croft, Limit Home Park, Northchurch, Berkhamsted, HP4

Approximate Area = 632 sq ft / 58.7 sq m
For identification only - Not to scale



Floor plan produced in accordance with RICS Property Measurement Standards incorporating International Property Measurement Standards (IPMS2 Residential). ©vidrecom 2024. Produced for The Park Home Agency Ltd. REF: 1153010



01793 230185
sales@theparkhomeagency.co.uk

Agents Notes: All measurements are approximate and quoted in metric with imperial equivalents and for general guidance only and whilst every attempt has been made to ensure accuracy, they must not be relied on. The fixtures, fittings and appliances referred to have not been tested and therefore no guarantee can be given that they are in working order. Internal photographs are reproduced for general information and it must not be inferred that any item shown is included with the property. For a free valuation, contact the numbers listed on the brochure