



Earths Wood Country Park, Clayton West, Huddersfield
£170,000

🛏️ 2 🚿 2 🛋️ 1



- Residential Park for the over 45's
- Secure Gated Development
- Two Double Bedrooms
- Lounge and Dining Room
- Double Glazing and Gas Central Heating
- Stunning Countryside Location
- Kingston 'Carisbrook' Design
- En-Suite and walk in wardrobe area
- Spacious and Light feel throughout
- Gardens and Driveway

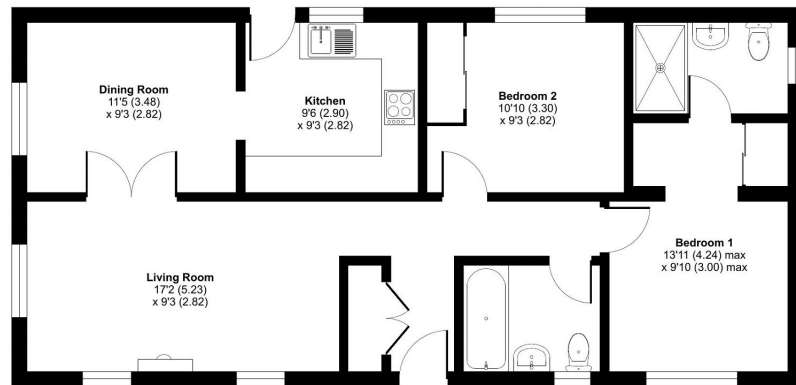


A stunning two double bedroom park home bungalow situated on a prominent plot on this gated residential park for the over 45's. Located in the Yorkshire countryside, this park boasts an idyllic setting that must be viewed to be appreciated. This 'Carisbrook' home boasts spacious, light and airy accommodation throughout which includes an entrance hall, separate lounge and dining rooms, fitted modern kitchen, a walk in wardrobe area and ensuite to the master bedroom, a further guest bathroom, gas central heating as well as gardens to all sides of the home and a driveway. Call to view now!



Bank End Lane, Huddersfield, HD8

Approximate Area = 802 sq ft / 74.5 sq m
For identification only - Not to scale



Floor plan produced in accordance with RICS Property Measurement Standards incorporating International Property Measurement Standards (IPMS2 Residential). ©indream2024. Produced for The Park Home Agency Ltd. REF: 1155041



01793 230185
sales@theparkhomeagency.co.uk

Agents Notes: All measurements are approximate and quoted in metric with imperial equivalents and for general guidance only and whilst every attempt has been made to ensure accuracy, they must not be relied on. The fixtures, fittings and appliances referred to have not been tested and therefore no guarantee can be given that they are in working order. Internal photographs are reproduced for general information and it must not be inferred that any item shown is included with the property. For a free valuation, contact the numbers listed on the brochure