



West Winch, Near Kings Lynn, Norfolk

Fixed Price £140,000

🛏️ 2 🚿 2 🛋️ 1



- Residential Park for the over 55's
- Popular Countryside Location
- OMAR Regency Design
- Two Double Bedrooms
- En-Suite Shower Room
- Further Bathroom
- Modern, Fitted Kitchen with Utility Room
- Small Gardens and Driveway
- No Onward Chain
- Call Today For a Viewing or Further Information

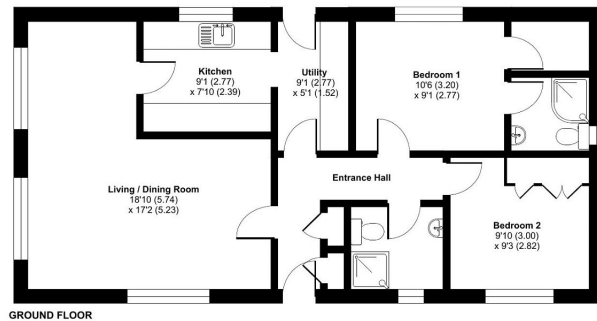


This well presented, two double bedroom park home bungalow is now available to purchase on this sought after residential park for the over 55's. This home is chain free for those wishing to complete quickly. This home built by OMAR Park Homes boasts two bedrooms with the master boasting an en-suite shower room and there is a further bathroom, a spacious Lounge/Dining Room and a modern, fitted kitchen with utility room. The exterior of the home features a private and easy to maintain garden, a driveway, outside tap and an outside shed with electric. Call today for a viewing.



East View Park Homes, 84 Main Road, West Winch, King's Lynn, PE33

Approximate Area = 753 sq ft / 70 sq m
For identification only - Not to scale



Floor plan produced in accordance with RICS Property Measurement Standards incorporating International Property Measurement Standards (IPMS Residential). ©indream2024. Produced for The Park Home Agency Ltd. REF: 1142041



01793 230185

sales@theparkhomeagency.co.uk

Agents Notes: All measurements are approximate and quoted in metric with imperial equivalents and for general guidance only and whilst every attempt has been made to ensure accuracy, they must not be relied on. The fixtures, fittings and appliances referred to have not been tested and therefore no guarantee can be given that they are in working order. Internal photographs are reproduced for general information and it must not be inferred that any item shown is included with the property. For a free valuation, contact the numbers listed on the brochure