



Shefford, Bedfordshire

Fixed Price £290,000

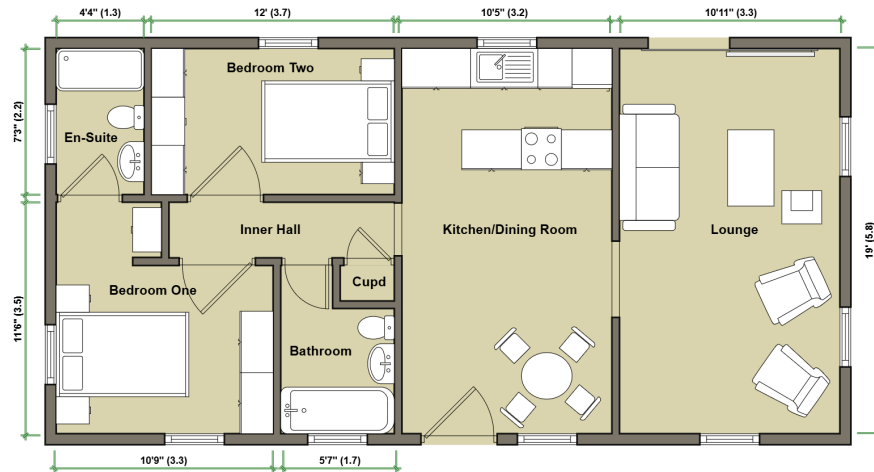
🛏️ 2 🪑 2 🚗 1



- Brand New Park Home Bungalow
- Two Double Bedrooms
- Impressive Kitchen with Integrated Appliances
- Lounge With Views Over Fields
- Gas Central Heating
- Tingdene Cosgrove Design
- Ensuite Shower Room
- Further Bathroom
- Double Glazing
- Driveway And Garden



A brand new two double bedroom park home bungalow located on the edge of this sought after residential park and boasts views over fields. This 'Cosgrove' designed home (40'x20') has to viewed internally to fully appreciate what it has to offer! As soon as you walk into the impressive kitchen/dining room with vaulted ceiling, you realise the quality of this home and it is further complimented by a spacious lounge with views over fields, two double bedrooms, an ensuite shower room, a further bathroom as well as manageable gardens to all sides and a driveway. This home is ready to purchase and occupy immediately.



01793 230185
sales@theparkhomeagency.co.uk

Agents Notes: All measurements are approximate and quoted in metric with imperial equivalents and for general guidance only and whilst every attempt has been made to ensure accuracy, they must not be relied on. The fixtures, fittings and appliances referred to have not been tested and therefore no guarantee can be given that they are in working order. Internal photographs are reproduced for general information and it must not be inferred that any item shown is included with the property. For a free valuation, contact the numbers listed on the brochure