



Woodside, Luton, Bedfordshire, LU1 4LP

Fixed Price £300,000

2 2

An impressive brand new park home bungalow located on a new phase of homes on this popular Residential park on the outskirts of Luton. This two double bedroom (44'x20') built by Manor Park Homes oozes quality and the home feels bright, airy and homely throughout. The master bedroom boasts a walk-in wardrobe and en-suite shower, a double second bedroom has built in wardrobes and there is also a further fitted bathroom. There is plenty of storage with a loft access hatch and built in cupboards but it is the open plan living area which really gives the wow factor to this home. It is spacious with plenty of windows and double doors to the front with a modern, fitted kitchen with breakfast island and integrated appliances. The home is located on a plot with small, easy to maintain garden areas to all sides as well as a driveway to the front of the home and a further park area to the rear of the home.

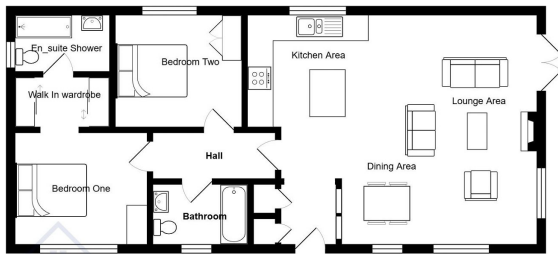


Floor Area: 880 sq. ft.

Tenure: Leasehold

Service Charge: £0 per annum

Ground Rent: £0 per annum



All measurements are approximate and for display purposes only



01793 230185

sales@theparkhomeagency.co.uk

Agents Notes: All measurements are approximate and quoted in metric with imperial equivalents and for general guidance only and whilst every attempt has been made to ensure accuracy, they must not be relied on. The fixtures, fittings and appliances referred to have not been tested and therefore no guarantee can be given that they are in working order. Internal photographs are reproduced for general information and it must not be inferred that any item shown is included with the property. For a free valuation, contact the numbers listed on the brochure