



**4 Yelverton Road,
London, SW11 3QQ
Prices from £655,000**



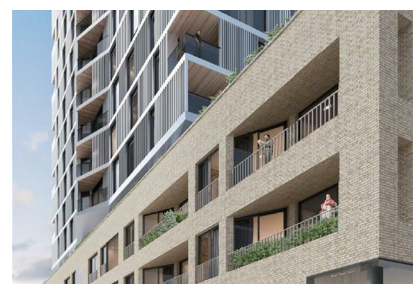
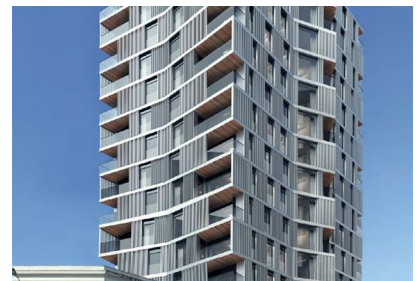
This exquisite two-bedroom apartment is situated in a brand-new riverside development that epitomizes sophistication and high-end elegance. Featuring a spacious balcony, it provides a perfect blend of indoor and outdoor living. Impeccably designed with meticulous attention to detail, the apartment boasts state-of-the-art amenities and premium finishes, ensuring a lifestyle of comfort and luxury. From the sleek, modern kitchen equipped with top-tier appliances to the stylish and inviting bedrooms, every corner of this residence exudes refinement and charm. Elevate your living experience in this exclusive sanctuary, where convenience and luxury harmoniously coexist.

VISION POINT'S LOCATION JUST A FEW MOMENTS FROM BATTERSEA SQUARE AND THE THAMES PATH, PUTS THE BEST OF BATTERSEA ON YOUR DOORSTEP

Whilst sitting just across the river from its immediate neighbours Chelsea and Fulham, Battersea has a unique charm and character of its own...it's younger, it's vibrant and a little more villagey. Vision Point is perfectly placed to explore the restaurants bars boutiques and pubs of Battersea's numerous lively streets.

If you know and love Battersea you will appreciate the charms of Battersea Park, Clapham Common, Battersea Square Northcote Road, Battersea Rise, St

- NEW BUILD APARTMENT
- BALCONY
- GREAT TRANSPORT LINKS
- ROOFTOP GARDEN
- COMPLETED
- RIVERSIDE LOCATION
- CONCIERGE



3rd Floor, 207 West Regent Street, London, W1B 3HH

T/ 02076927031

E/ i.ahmed@clear-investment.com