

**203 Marsh Wall,
London, E14 9ZN
Prices from £575,000**



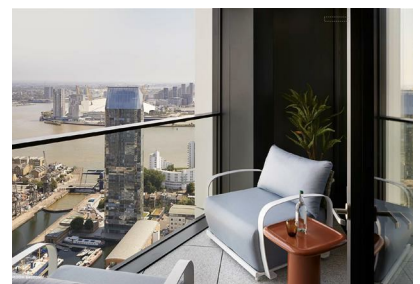
This stunning new 1 bedroom apartment with balcony is a very spacious and light apartment, with great views in the heart of Canary Wharf.

Amory Tower is a collection of residential apartments, soaring 53 storeys high and standing 182m tall, offering unparalleled views of one of London's most dynamic areas. Designed and ready for immediate occupation.

Designed for a brighter lifestyle Life's brighter all round at Amory Tower, where contemporary light-filled apartments offer far-reaching views across London and the River Thames. Enjoy healthier, greener living in the urban oasis of Canary Wharf, with landscaped parks, riverside walks and a thriving community on your doorstep

The apartments have great views over the River Thames, and right outside your front door is Liberty Square which is the perfect green space for some morning yoga or a post-run stretch. And with less traffic, you can enjoy your exercise in fresh air. in the relaxed green setting of Liberty Square with seating and a play area and Landscaped Gardens.

- IMMEDIATE OCCUPANCY
- GYM
- RESIDENTS LOUNGE
- LANDSCAPED GARDENS
- ROOFTOP TERRACE
- 24 HOUR CONCIERGE
- SWIMMING POOL/STEAM ROOM/SAUNA
- SCREENING ROOM
- MEETING ROOMS
- PRIVATE BALCONY



3rd Floor, 207 West Regent Street, London, W1B 3HH

T/ 02076927031

E/ i.ahmed@clear-investment.com