



1 Newcastle Place, London, W2 1BW Prices from £2,190,000



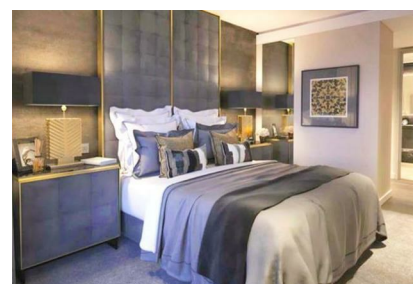
This luxury three bedroom apartment is located on the 2nd floor of this stunning highly acclaimed luxury new development located within Paddington. Very well Presented with high spec finishes, and extends to a generous 1400 square feet and has a balcony.

The Residences on Paddington Green is a tranquil haven overlooking a central courtyard as well as the open garden square of Paddington Green, and is the latest phase of the stunning West End Gate which is all sold out. This phase is due for completion early 2026.

Comprising 50 light filled apartments and accessing the private residences facilities of West End Gate; it is quintessential London at its finest. Facilities within the development include a 24-hour concierge, gym, swimming pool and a private cinema. With a new piazza complete with water features and beautiful landscaping, its own courtyard and private balconies, The Residences on Paddington Green offer an abundance of quiet green space for discerning buyers. Announcing the entrance to London's West End, West End Gate is a modern interpretation of classic London and brings brand new homes to one of London's most prestigious postcodes.

West End Gate provides dramatic views towards the City, Regent's Park and Hyde Park. A sense of arrival is created by a sweeping entrance with water features at ground level that transitions into a grand lobby with secluded seating areas providing residents with pockets of privacy.

- New Build Apartment
- Private Balcony
- Private Gym
- Cinema Room/Private Dining
- Beautiful Landscaped Gardens
- New Highly Acclaimed Development
- 24 Hour Concierge
- Swimming Pool
- Business Lounge
- Completing Early 2026



3rd Floor, 207 West Regent Street, London, W1B 3HH

T/ 02076927031

E/ i.ahmed@clear-investment.com