



**Chartfield Avenue,
London, SW15 6HQ
£4,990,000**

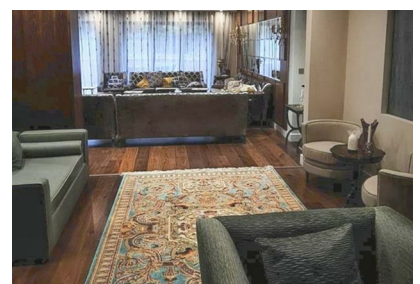


A stunning 7 bedroom with 7 En Suites, modern house with beautiful design features to offering grandeur and flexibility in entertaining and accommodation space. Generous size rooms, Grand Living Space, Modern Kitchens, bathrooms. Private and secluded, Electric Gate at front and huge garden at rear. Very seldom does a huge family home like this come onto the market in this exclusive location.

Must be viewed to be appreciated.

Chartfield Avenue is a quiet tree lined double width avenue in the heart of Putney, the house has ample parking with a private gated front garden and is perfectly situated for easy access to the schools of the area and its surrounds leading to the home counties just outside of London.

- Huge Family Home
- Private Grounds
- Culdesac
- 7 En Suites
- Tree Lined Street
- Great Location
- Electric Gates
- 7 Bedrooms
- Large Private Gardens
- Great Schools



3rd Floor, 207 West Regent Street, London, W1B 3HH

T/ 02076927031

E/ i.ahmed@clear-investment.com