



5 Molten Court Moulding Lane, London

London

In Excess of £385,000



5 Molten Court Moulding Lane

London, London

Embrace the best of city living in a flourishing area that combines modern comfort with urban convenience. Set in the heart of the award-winning Anthology development in Deptford SE14, this stylish first-floor apartment offers a prime location between New Cross and Deptford, making it ideal for those seeking both convenience and community.

Inside you will find an inviting open plan living and dining area, perfect for entertaining and everyday living. The kitchen is fully integrated with contemporary appliances, ensuring you have everything you need at your fingertips. The apartment also features a spacious bathroom suite and a comfortable double bedroom with ample built-in wardrobe space. Large windows flood the home with natural light, and the private balcony provides a serene outdoor retreat.

Deptford is a vibrant and desirable neighbourhood, celebrated for its eclectic mix of trendy bars, restaurants, and independent coffee shops. Deptford High Street was recently included in Timeouts 33 'coolest' streets describing it as "the most alive street in London". The local community is thriving, offering a unique and lively atmosphere. With New Cross, Deptford, and Deptford Bridge DLR stations all within walking distance, so commuting is easy. You'll have easy access to Central London and Canary Wharf via National Rail, Overground, and DLR. Furthermore, historic Greenwich with its restaurants, museums and market is only a mile away.

In addition Cycleway 4 is in close proximity, giving swift access to both London Bridge (18 mins) and Greenwich (5 mins).

- Close Proximity to Deptford and New Cross
- Private Balcony
- Part of an Award Winning Development



I LOVE
YOU.
IN
FRENCH.

JE T'AME





5 Molten Court Moulding Lane

London, London

- Close Proximity to Deptford and New Cross
- Private Balcony
- Part of an Award Winning Development

Council Tax band: C

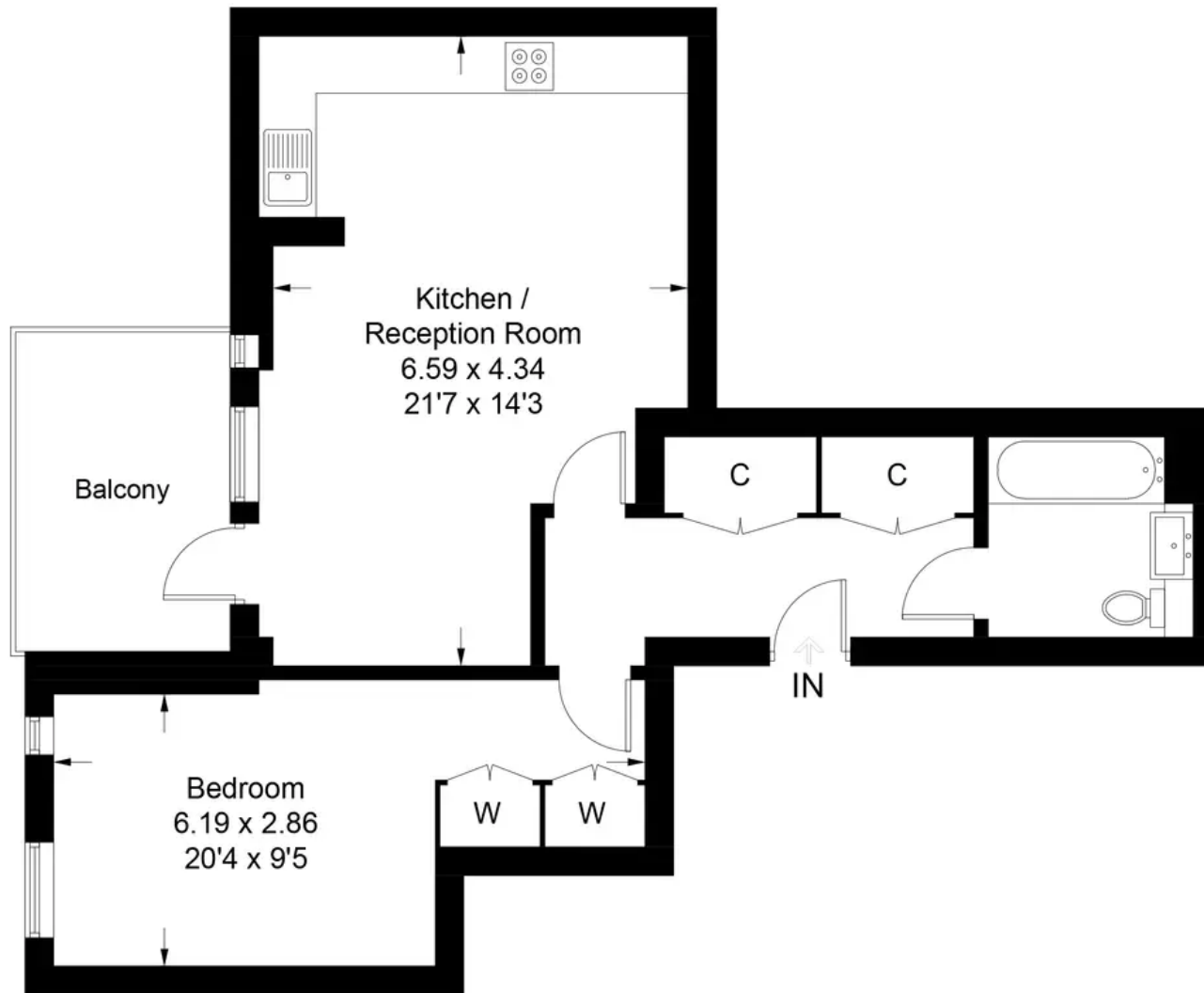
Tenure: Leasehold

EPC Energy Efficiency Rating: B

EPC Environmental Impact Rating: A



Molten Court, Moulding Ln, London SE14



Approximate Gross Internal Area = 57.1 sq m / 614 sq ft

This plan is for layout guidance only. Not drawn to scale unless stated. Windows and door openings are approximate. Whilst every care is taken in the preparation of this plan, please check all dimensions, shapes and compass bearings before making any decisions reliant upon them. (ID1089172)