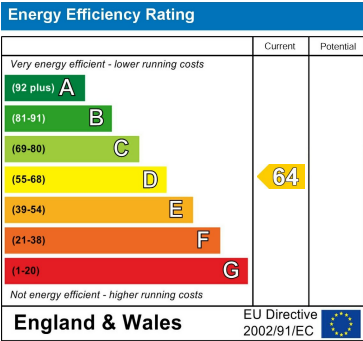


Council Tax Band

C

Energy Performance Graph



Call us on

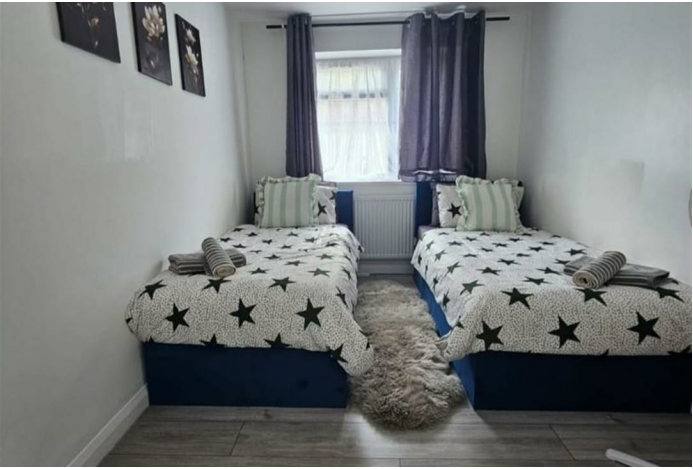
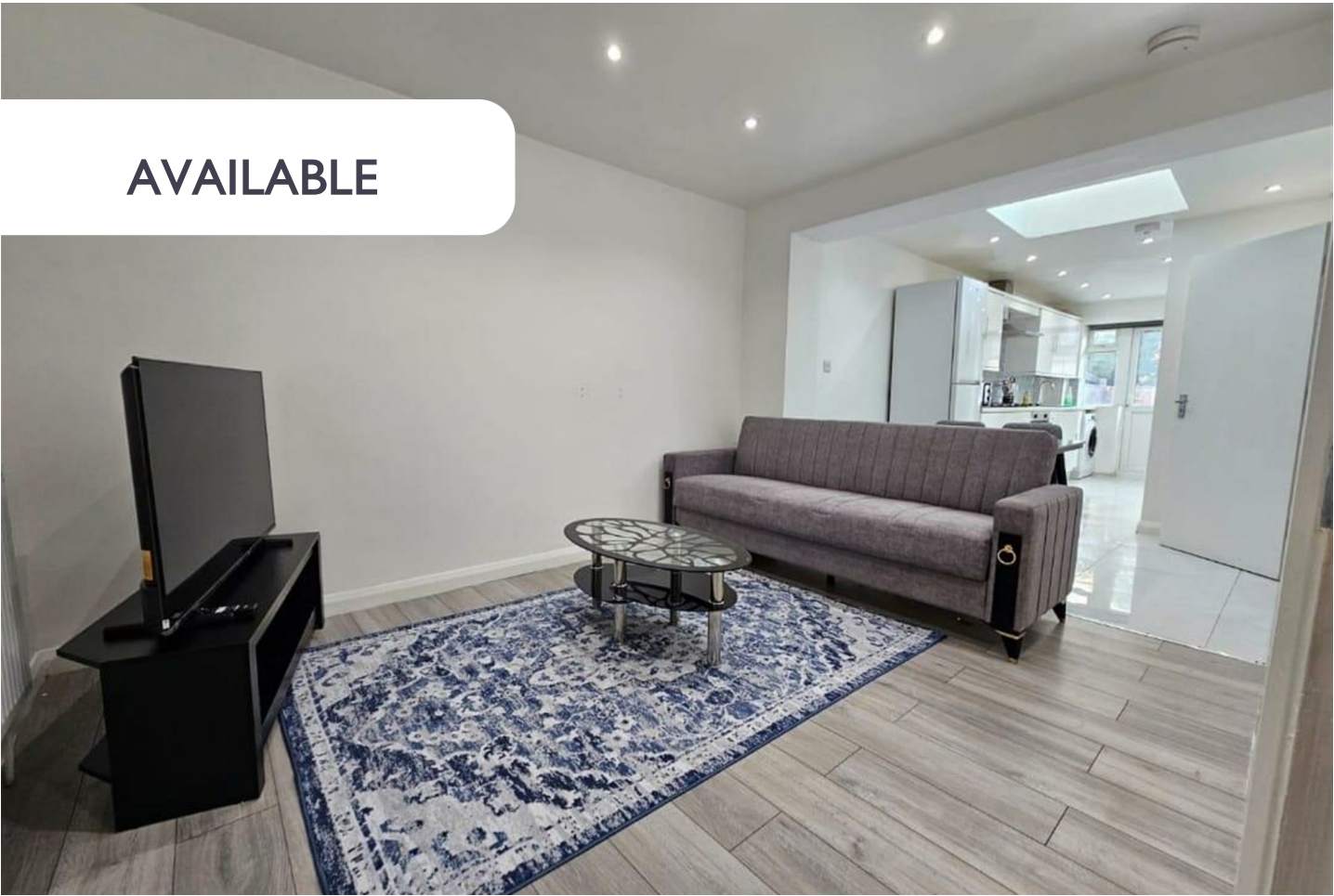
02078460308

info@stonebanks.co.uk
www.stonebanks.co.uk

Agents Note: Whilst every care has been taken to prepare these particulars, they are for guidance purposes only. All measurements are approximate and are for general guidance purposes only and whilst every care has been taken to ensure their accuracy, they should not be relied upon and potential buyers are advised to recheck the measurements.



AVAILABLE



NOT SPECIFIED (EPC RATING: D)

RIBCHESTER AVENUE, PERIVALE,
GREENFORD, UB6 8TG

£2,500



2 Bedroom Not specified located in Greenford

Nestled on the charming Ribchester Avenue in Perivale, Greenford, this delightful property offers a perfect blend of comfort and character. Built in 1935, the home boasts a generous living space of 1,291 square feet, making it an ideal choice for families or those seeking extra room to breathe.

Upon entering, you are welcomed into a spacious reception room that serves as the heart of the home, perfect for entertaining guests or enjoying quiet evenings. The property features two well-proportioned bedrooms, providing ample space for relaxation and rest. The bathroom is conveniently located, ensuring ease of access for all residents.

The location of this property is particularly appealing, with a variety of local amenities and transport links nearby, making it easy to explore the surrounding areas. The neighbourhood is known for its friendly community atmosphere, offering a pleasant environment for families and individuals alike.

This charming home, with its classic design and spacious layout, presents a wonderful opportunity for those looking to settle in a vibrant part of Greenford. Whether you are a first-time buyer or seeking a new place to call home, this property is sure to meet your needs and exceed your expectations.

