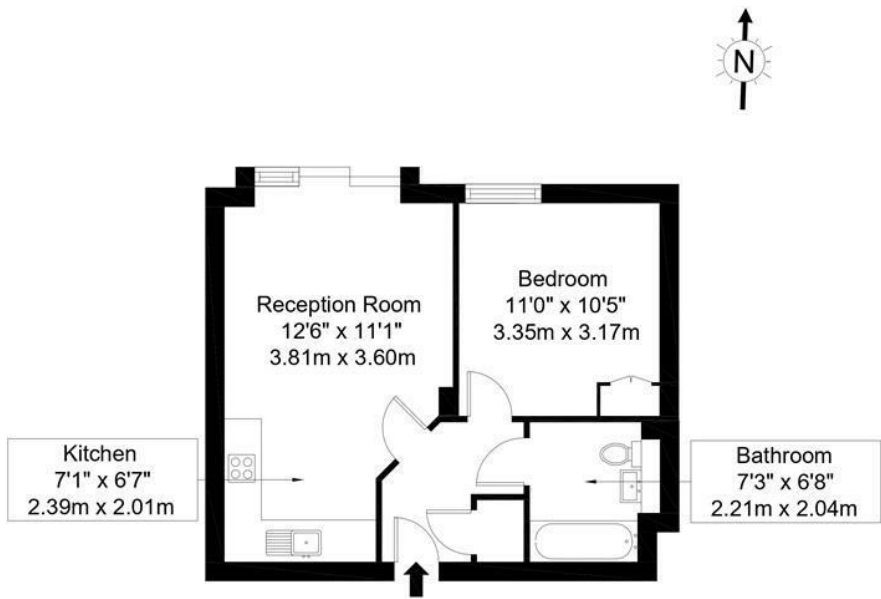


Adriatic Apartments, E16 1BU

Approx Gross Internal Area = 39 sq m / 420 sq ft



First Floor

Ref

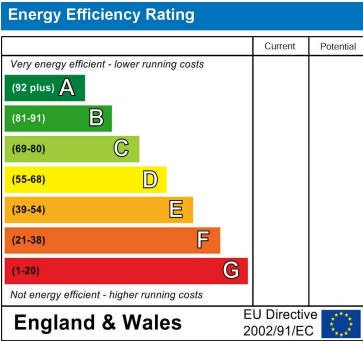
Copyright **BLEU PLAN**

The Floor plan is not to scale and measurements and areas shown are approximate and therefore should be used for illustrative purposes only. The plan has been prepared in accordance with the RICS code of Measuring Practice and whilst we have confidence in the information produced it must not be relied on. If there is any aspect of particular importance, you should carry out or commission your own inspection of the property.  
Copyright @ BLEUPLAN

Council Tax Band

C

Energy Performance Graph



Call us on

02078460308

info@stonebanks.co.uk  
www.stonebanks.co.uk

Agents Note: Whilst every care has been taken to prepare these particulars, they are for guidance purposes only. All measurements are approximate and are for general guidance purposes only and whilst every care has been taken to ensure their accuracy, they should not be relied upon and potential buyers are advised to recheck the measurements.



LEASEHOLD



APARTMENT (EPC RATING: )

889 ADRIATIC APARTMENTS, 20 WESTERN  
GATEWAY, LONDON, E16 1BU  
OFFERS IN EXCESS OF  
£310,000





# I Bedroom Apartment located in London

Introducing this modern I-bedroom apartment, a distinguished addition to the market. Boasting a well-designed open-plan kitchen and living area, equipped with top-tier integrated kitchen appliances, this property exemplifies contemporary living. The spacious bathroom and bedroom further enhance the overall living experience.

Nestled in a prime location, the residence offers unmatched convenience, being a mere stroll away from the Excel Centre and a short cable car ride from the iconic O2 Arena. A plethora of activities and dining options await at your doorstep, creating an ideal setting for those who appreciate dynamic city living.

Beyond its enviable location, this property goes the extra mile, providing a concierge service and communal gym. To aid in your decision-making process, we've thoughtfully crafted a virtual tour for you to explore, and we are more than willing to arrange a physical viewing at your convenience.

Whether you're embarking on your journey as a homeowner or eyeing it as a lucrative buy-to-let investment, this property stands out as an excellent choice in an exceptional location. Act swiftly—reach out to Stonebanks today to schedule a viewing. Your next chapter awaits in this remarkable residence.



Stonebanks | 504 Cumberland House, 80 Scrubs Lane, London, NW10 6RF

Stonebanks | 504 Cumberland House, 80 Scrubs Lane, London, NW10 6RF