



APARTMENT (EPC RATING:)

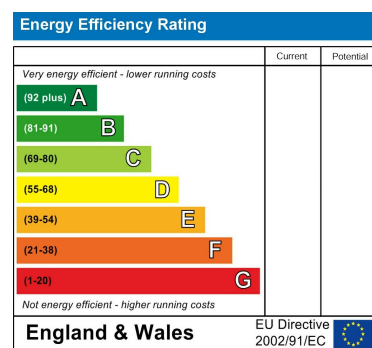
FLAT 4, SOMERSET COURT 79-81 LEXHAM GARDENS, LONDON, W8 6JN PER WEEK

£2,050 PER WEEK



Council Tax Band

Energy Performance Graph



Call us on

02078460308

info@stonebanks.co.uk

www.stonebanks.co.uk

Agents Note: Whilst every care has been taken to prepare these particulars, they are for guidance purposes only. All measurements are approximate and are for general guidance purposes only and whilst every care has been taken to ensure their accuracy, they should not be relied upon and potential buyers are advised to recheck the measurements.



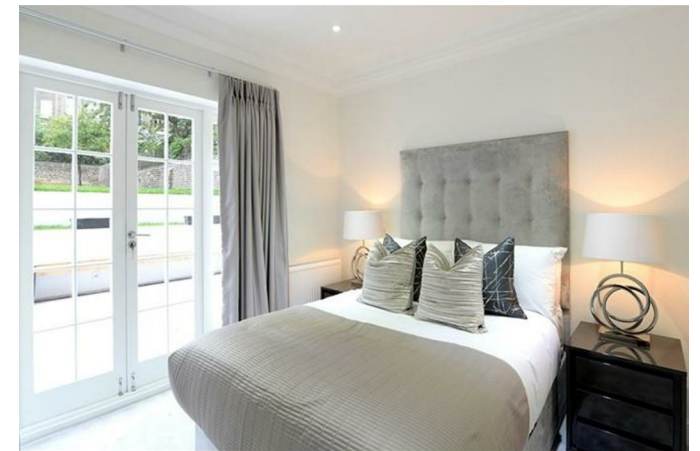
3 Bedroom Apartment located in London

Situated in the heart of the fashionable Royal Borough of Kensington and Chelsea, Somerset Court's newly redecorated apartments are a prime choice for those seeking stylish flats to rent in W8.

Surrounded by family-friendly restaurants, charming cafés, and a variety of intriguing shops, these attractive Kensington apartments are ideal for families with children as well as young professionals. The two-bedroom flats are conveniently located near dining establishments and upscale boutiques.

With several Tube stations just minutes away, an abundance of buses and night buses operating 24/7 throughout London, and rapid connections to Heathrow Airport and key London Underground stations such as Gloucester Road, Earls Court, and High Street Kensington, commuting is exceptionally convenient.

Residents of Somerset Court will also enjoy close proximity to Holland Park and Kensington Gardens, providing access to expansive green spaces. Additionally, Museum Mile, home to the Natural History Museum, Science Museum, and Victoria and Albert Museum, is nearby, ensuring plenty of entertainment options for weekends and holidays.



Stonebanks | 504 Cumberland House, 80 Scrubs Lane, London, NW10 6RF

Stonebanks | 504 Cumberland House, 80 Scrubs Lane, London, NW10 6RF