



Hazeldene Road

Links View, Northampton

oriordanbond
SALES & LETTINGS



Hazeldene Road

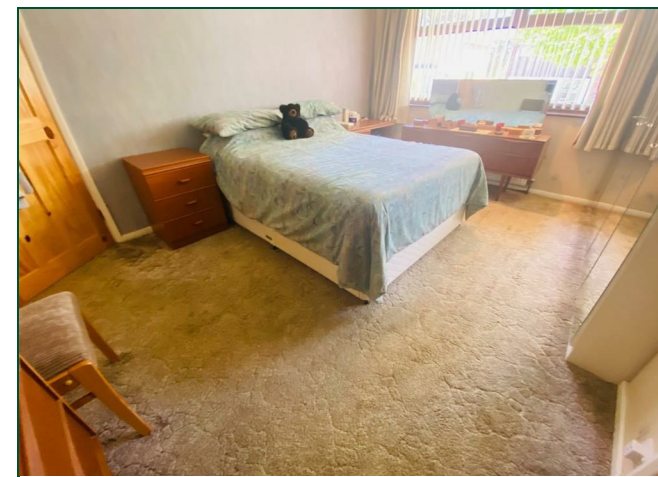
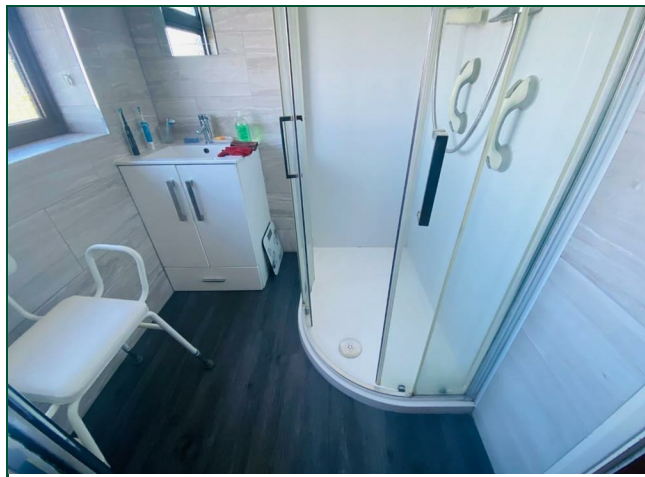
Links View
NN2 7NZ

Guide Price
£265,000

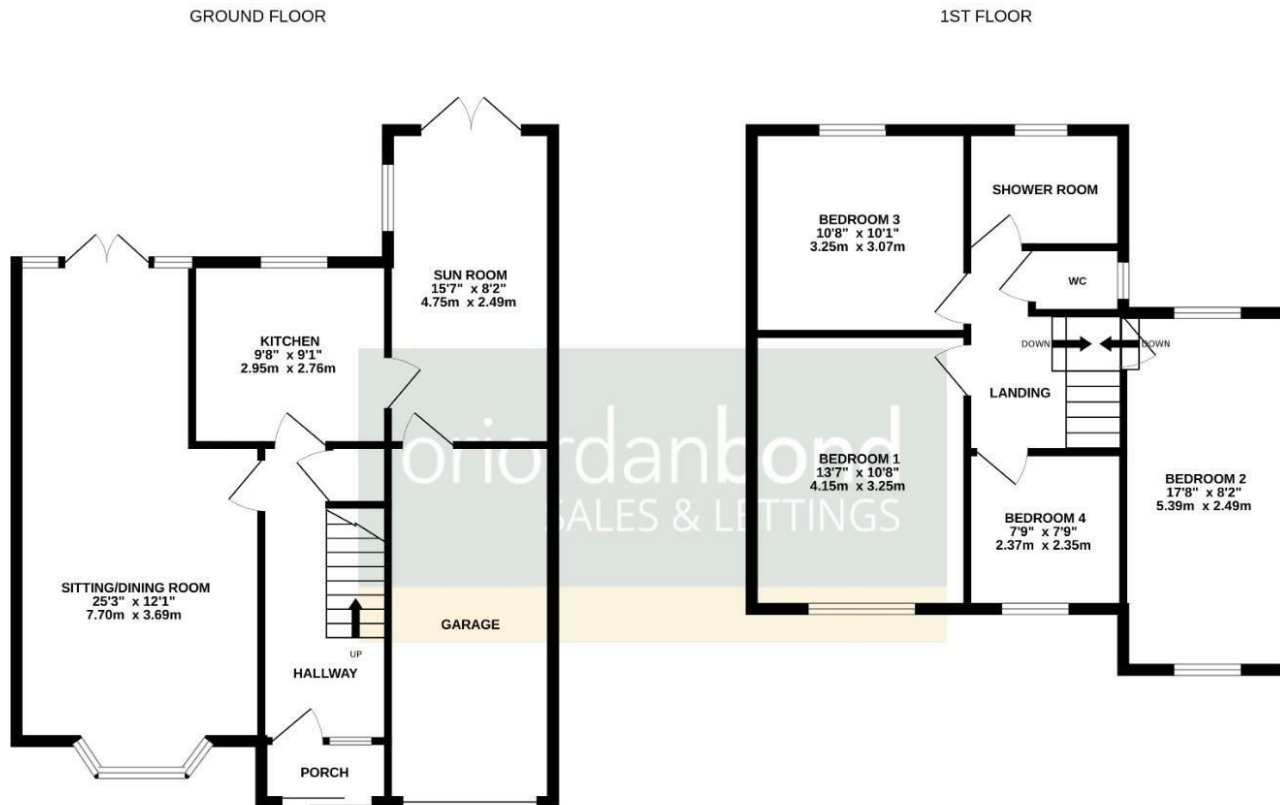
An established and extended four bedroom home situated in this popular location within Links View. The property has been occupied by the current owners for many years.

Accommodation comprises porch, entrance hall, dual aspect sitting/dining room with French doors to the garden, kitchen and a large sun room leading to a private decked patio. To the first floor are four bedrooms, and a re-fitted shower room. Outside is a front garden with driveway leading to a garage and a beautifully maintained rear garden with patio areas, rockery and shrub borders. Further benefits include gas radiator heating with serviced boiler and uPVC double glazing. (C/1200/L)

- Established and extended four bedroom home
- Large sun room
- Re-fitted shower room
- Gas radiator heating
- Beautifully maintained rear garden
- Driveway and garage







TOTAL FLOOR AREA : 1200sq.ft. (111.5 sq.m.) approx.

Whilst every attempt has been made to ensure the accuracy of the floorplan contained here, measurements of doors, windows, rooms and any other items are approximate and no responsibility is taken for any error, omission or mis-statement. This plan is for illustrative purposes only and should be used as such by any prospective purchaser. The services, systems and appliances shown have not been tested and no guarantee as to their operability or efficiency can be given.

Made with Metropix ©2024



Additional information

- Council Tax Band: C
- Energy Efficiency Rating: C

Viewing

Viewing strictly by appointment – details below

Disclaimer

O’Riordan Bond Estate Agents Limited has not tested apparatus, equipment, fittings or services and so cannot verify they are in working order. The buyer is advised to obtain verification from their solicitor or surveyor.

O’Riordan Bond Parklands Sales

01604 639007

parklands@oriordanbond.co.uk

