



# Gayhurst Close

Moulton, Northampton

oriordanbond  
SALES & LETTINGS



## Gayhurst Close

Moulton

NN3 7LQ

OFFERS OVER £265,000

An immaculately presented three bedroom chalet style home, offered to the market with no onward chain, situated in the popular village of Moulton, with a great choice of local shops, cafés, community centre and fantastic transport links.

The accommodation comprises entrance hall, shower room, fitted kitchen, sitting/dining room with dual aspect and a ground floor bedroom. To the first floor are two further double bedrooms with W/C to the master. Externally to the front is an artificial lawn with ample off road parking via a private drive and access to a single garage. To the rear is an enclosed garden with lawn area, mature shrubs and paved patio area. Further benefits include uPVC double glazing and gas central heating. (B/857/S)

### Additional information

- Council Tax Band: C
- Energy Efficiency Rating: D

### Viewing

Viewing strictly by appointment – details below

### Disclaimer

O'Riordan Bond Estate Agents Limited has not tested apparatus, equipment, fittings or services and so cannot verify they are in working order. The buyer is advised to obtain verification from their solicitor or surveyor.

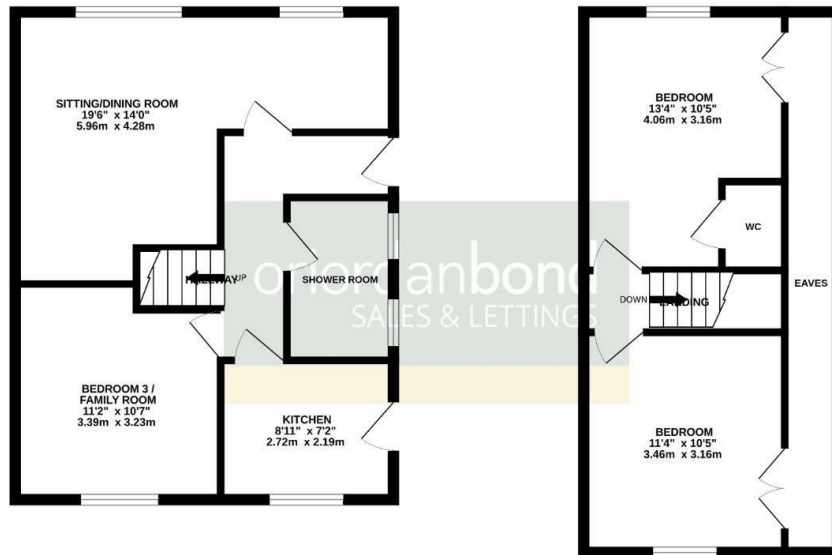
O'Riordan Bond Parklands Sales  
01604 639007

parklands@oriordanbond.co.uk



GROUND FLOOR

1ST FLOOR



TOTAL FLOOR AREA: 857 sq.ft. (79.6 sq.m.) approx.

Whilst every attempt has been made to ensure the accuracy of the floorplan contained herein, measurements of doors, windows, floors and any other items are approximate and no responsibility is taken for any error, omission or mis-statement. This plan is for illustrative purposes only and should be used as such by any prospective purchaser. The services, systems and appliances shown have not been tested and no guarantee as to their operability or efficiency can be given.  
Made with Metapac 02/24