

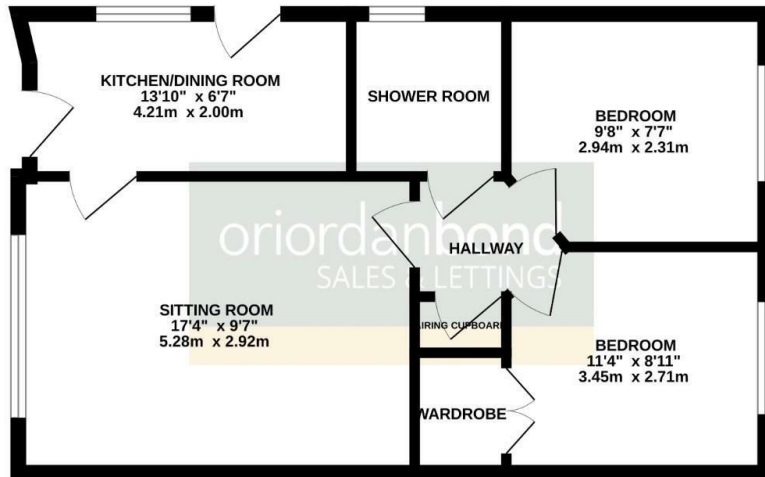


**Druids Way**  
Parklands, Northampton

**oriordanbond**  
SALES & LETTINGS



GROUND FLOOR  
650 sq.ft. (60.4 sq.m.) approx.



TOTAL FLOOR AREA: 650 sq.ft. (60.4 sq.m.) approx.  
While every attempt has been made to ensure the accuracy of the floorplan concerned here, measurements of doors, windows, rooms and any other items are approximate and no responsibility is taken for any error, omission or mis-statement. This plan is for illustrative purposes only and should be used as such by any prospective purchaser. The services, systems and appliances shown have not been tested and no guarantee as to their operability or efficiency can be given.  
Made with Metaphor ©2024

## Druids Way

Parklands  
NN3 6EB

OFFERS OVER £200,000

A semi-detached bungalow, situated in this sought after location, close to shops, local amenities and Northampton School for Girls. Offered for sale with no onward chain, the property represents good value.

Accommodation comprises sitting room with brand new carpets and feature fireplace, kitchen/breakfast room, two double bedrooms and a shower room. Outside is a block paved driveway leading to a garage with a low maintenance garden to the front and an enclosed rear garden with lawn and paved patio areas. Further benefits include uPVC double glazing and gas radiator heating serviced via a combi boiler. (B/650/M)

### Additional information

- Council Tax Band: B
- Energy Efficiency Rating: D

### Viewing

Viewing strictly by appointment – details below

### Disclaimer

O’Riordan Bond Estate Agents Limited has not tested apparatus, equipment, fittings or services and so cannot verify they are in working order. The buyer is advised to obtain verification from their solicitor or surveyor.

O’Riordan Bond Parklands Sales  
01604 639007

[parklands@oriordanbond.co.uk](mailto:parklands@oriordanbond.co.uk)

