



29 High Grove Park, Burscough
£340,000

High Grove Park, Burscough

Detached House situated on the popular High Grove development. This property which is modern throughout comprises of hall, cloakroom, lounge, open plan kitchen dining, utility and storage on the ground floor. Located on the 1st floor you have four bedrooms and family bathroom. The master bedroom also benefits from having an En-suite. Enclosed rear garden, private driveway and garage on the exterior. Viewings a MUST!

Council Tax band: E

Tenure: Freehold

- Corner Plot
- Four Bedrooms
- Utility Room
- Open Plan Kitchen Dining
- Bathroom, En-suite & Cloak
- Enclose Rear Garden
- Driveway & Garage
- Close To Local Amenities



Entrance Hall

Front door to hallway. Doors leading to lounge, kitchen dining, WC and storage. Stairs to 1st floor.

Lounge

11' 4" x 19' 9" (3.46m x 6.03m)

Window to front, French doors leading into rear garden and LVT flooring.

Kitchen Dining

19' 9" x 11' 9" (6.01m x 3.59m)

An excellent range of eye and low level units incorporating a stainless steel sink and drainer unit. Built in double oven and built in gas hob with extractor built over. Integrated fridge freezer and dishwasher. Window to front and two windows to side. Door to utility.

Utility

4' 8" x 6' 6" (1.43m x 1.99m)

Plumbed in for washing machine, dryer currently on top of unit. Sink and drainer unit.

Landing

Doors to four bedrooms, bathroom and loft access.

Bedroom One

11' 2" x 11' 3" (3.41m x 3.43m)

Window to rear and Door to En-suite.

En-suite

Three piece suite comprising of double shower with mixer shower over, vanity wash hand basin and low level WC. Heated towel rail.

Bedroom Two

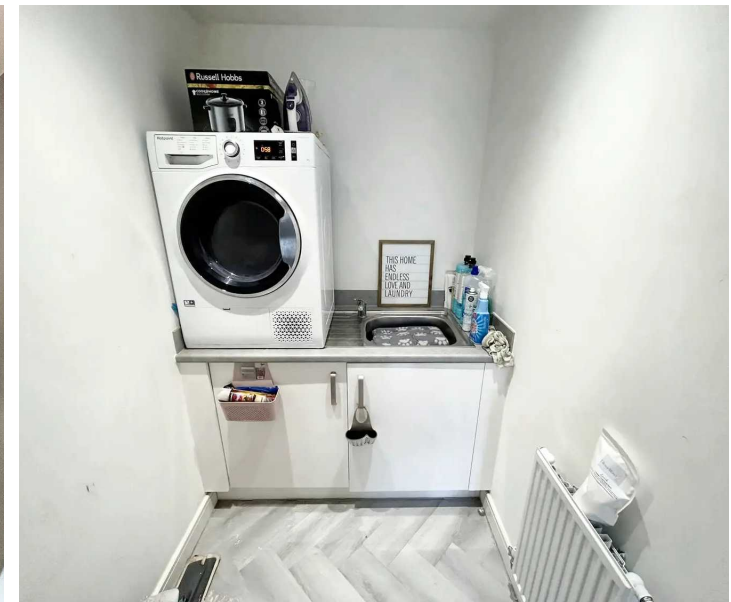
11' 11" x 9' 10" (3.63m x 2.99m)

Window to side.

Bedroom Three

9' 8" x 10' 0" (2.95m x 3.05m)

Windows to the front and side.



Bedroom Four

8' 4" x 10' 2" (2.53m x 3.10m)

Window to front.

Bathroom

6' 7" x 6' 2" (2.00m x 1.87m)

Three piece suite comprising panelled bath with mixer shower over and screen, pedestal wash hand basin and low level WC. Fully tiled and window to side.

Garage

Up and over door. Electrics.

Rear Garden

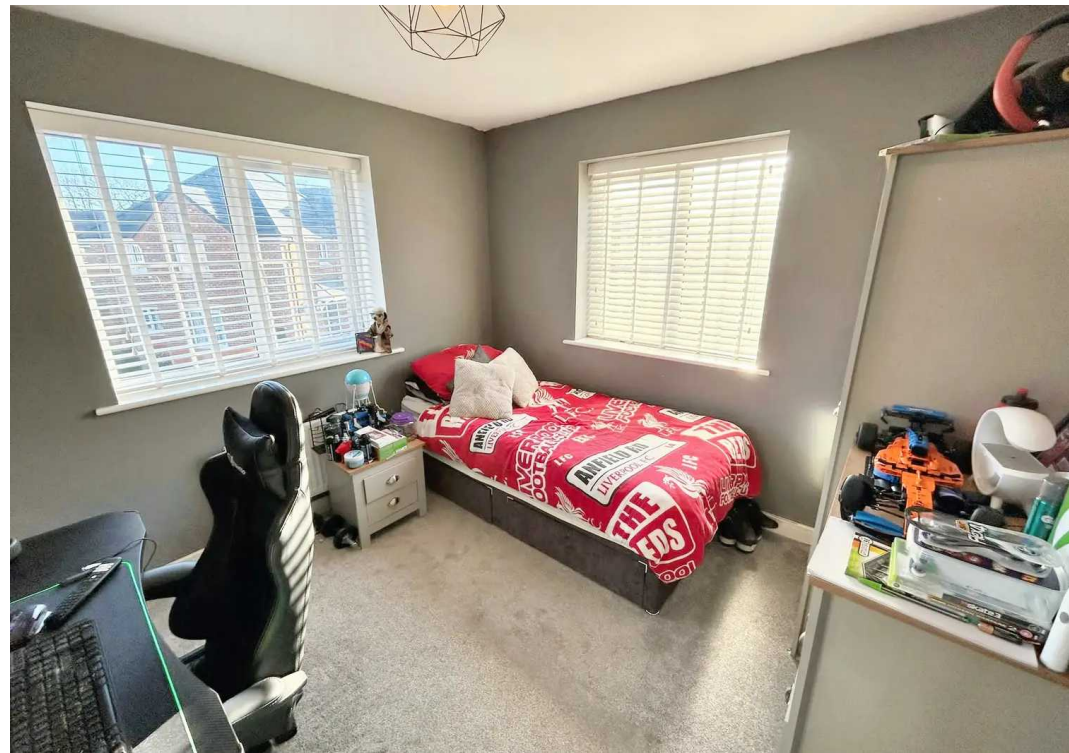
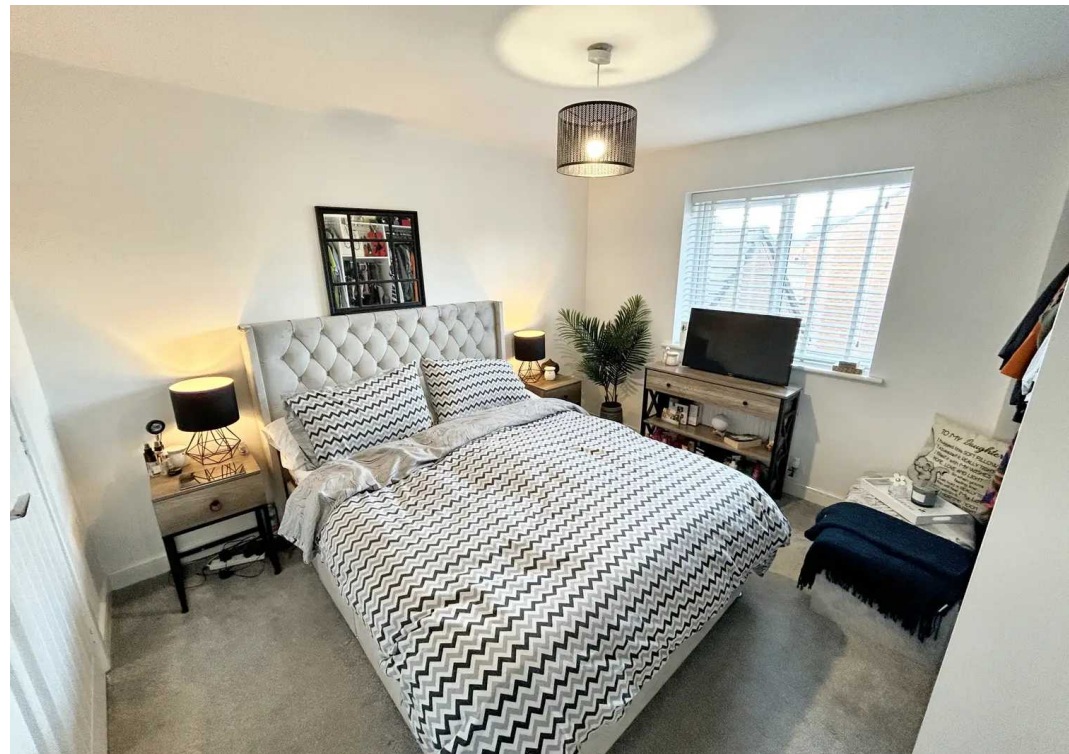
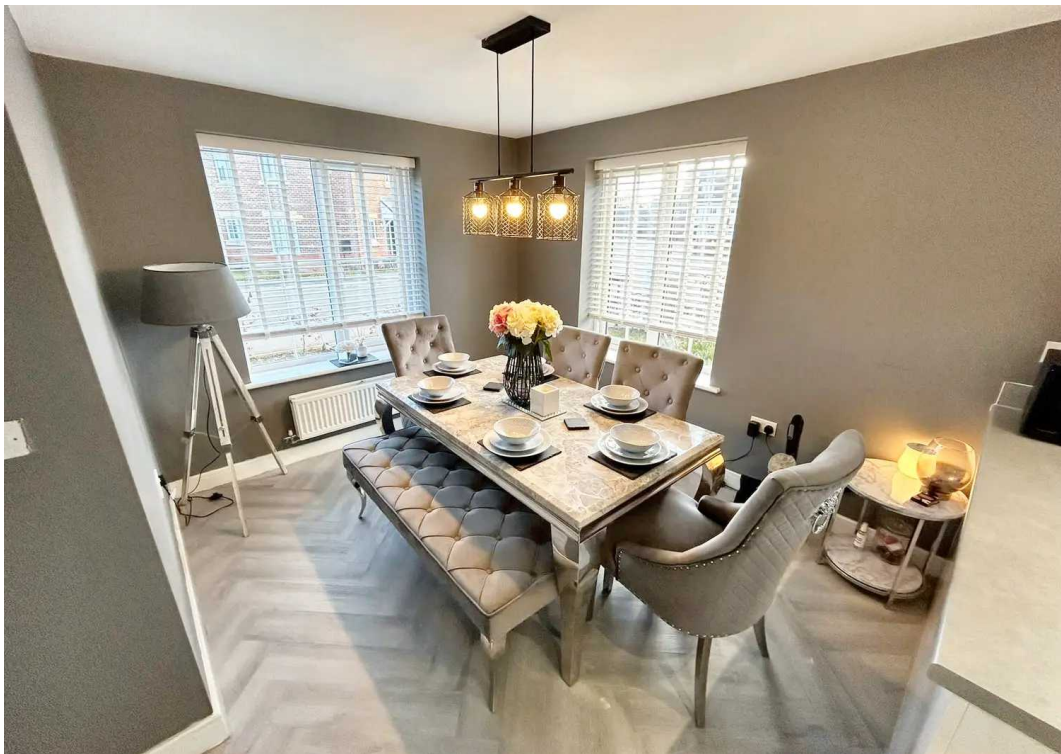
Enclosed rear garden with patio, Astro turf and an additional decked patio area.

DRIVEWAY

3 Parking Spaces

Private driveway with spaces for up to 3 cars.







Victoria Estates & Property Management

49a Liverpool Road North, Burscough - L40 0SA

01704 897647 • victoria@vepm.co.uk • <http://vepm.co.uk>



VICTORIA ESTATES
&
PROPERTY MANAGEMENT