





## Bromilow Road

Available now we have this Semi Detached House located on Bromilow Road which is within walking distance of local amenities. The property is comprised of hall, lounge dining, kitchen utility and WC on the ground floor with two double bedrooms and family bathroom on the 1st floor. The property also benefits from private parking at the front and enclosed rear garden.

If the Landlord is willing to accept pets, then the monthly rent will be an additional £50pcm. Victoria Estates politely ask you to contact the office before viewing internally or externally.

Council Tax band: A

Tenure: Freehold

- Semi Detached House
- Two Double Bedrooms
- Modern Kitchen With Integrated Products
- Utility Room & Downstairs WC
- Enclosed Rear Garden
- Off Road Parking For One Car
- Walking Distance To Amenities
- Available Now





### Entrance Hall

Front door into hallway with door leading into dining room.  
Stairs to 1st floor.

### Lounge

11' 6" x 10' 0" (3.50m x 3.04m)

Window to front, laminate flooring and feature fireplace.  
Opens into dining room.

### Dining Room

11' 11" x 12' 10" (3.64m x 3.92m)

French doors into rear garden and door into kitchen.  
Laminate flooring.

### Kitchen

11' 5" x 7' 6" (3.47m x 2.28m)

An excellent range of eye and low level units incorporating  
a stainless steel sink and drainer unit. Built in electric hob  
with extractor hood over and built in electric oven.  
Integrated fridge, freezer and dishwasher. Window to side,  
doors leading into storage and utility. Tiled flooring.

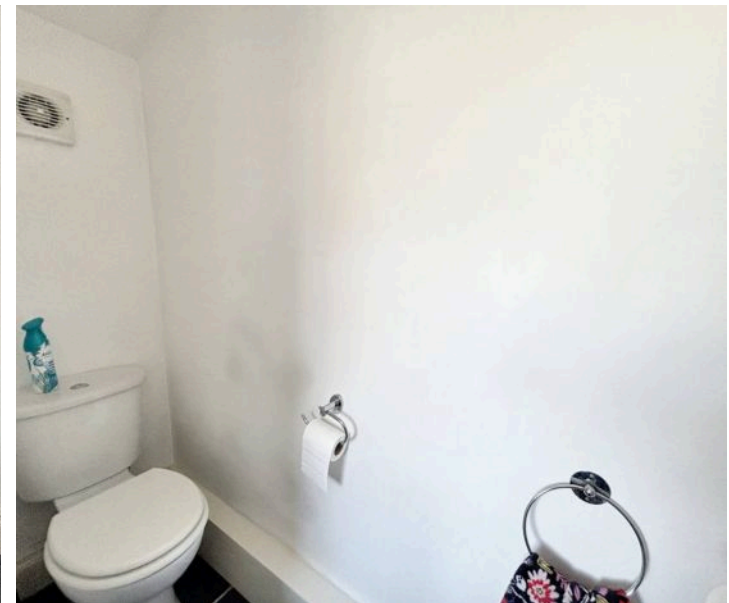
### Utility Room

6' 7" x 5' 3" (2.01m x 1.60m)

Worktop with stainless steel sink and drainer unit, plumbed  
in for washing machine and space for dryer. Boiler.  
Window to side and door into WC.

### WC

Two piece suite comprising low level WC and pedestal  
wash hand basin. Tiled flooring.





**Landing**

Two tier landing with doors leading to bathroom and both bedrooms.

**Bedroom One**

15' 6" x 10' 0" (4.72m x 3.04m)

Two windows to front.

**Bedroom Two**

12' 11" x 9' 3" (3.93m x 2.82m)

Window to rear.

**Bathroom**

11' 0" x 7' 6" (3.36m x 2.28m)

Four piece suite comprising panelled bath, shower cubicle with mixer shower, pedestal wash hand basin and low level WC. Window to rear, heated towel rail and tiled flooring.

**Rear Garden**

Enclosed rear garden with flagged patio areas and lawn. Gate to side leading to front.











## Victoria Estates & Property Management

49 Liverpool Road North, Burscough - L40 0SA

01704 897647 • victoria@vepm.co.uk • <http://vepm.co.uk>



VICTORIA ESTATES  
&  
PROPERTY MANAGEMENT