



Traditional back to back end terraced house available to the open market with no onwards chain. The property comprises of porch, open plan lounge kitchen, two bedrooms and bathroom over the 2 floors. The property benefits from off road parking and an outbuilding for extra storage. Perfect for Buy 2 Let Investors or First Time Buyers.

Council Tax band: A

Tenure: Freehold

- End Terraced House
- Two Bedrooms
- Open Lounge Kitchen
- Walking Distance To Amenities
- Outbuilding For Storage
- Newly Fitted Carpets & Flooring Throughout
- Attention Investors & First Time Buyers
- No Chain



**Entrance**

Front door into porch with door into open plan lounge kitchen.

**Lounge Kitchen**

13' 3" x 16' 5" (4.05m x 5.01m)

Open plan into kitchen, window to front and understairs storage. A range of eye and low level units incorporating a stainless steel sink and drainer unit. Plumbed in for washing machine. Partly tiled walls. New flooring throughout. Stairs to 1st floor.

**Landing**

Doors to both bedrooms and bathroom.

**Bedroom One**

7' 10" x 10' 3" (2.40m x 3.12m)

Window to front and newly carpeted. Loft access.

**Bedroom Two**

4' 0" x 6' 0" (1.23m x 1.83m)

Window to front and newly carpeted.

**Bathroom**

4' 0" x 6' 0" (1.23m x 1.83m)

Three piece suite comprising shower cubicle with mixer shower over, pedestal wash hand basin and low level WC. Partly tiled walls, heated towel rail and new flooring.

**Outbuilding**

Outbuilding for storage with electrics.

**Front Garden**

Flagged area to front.

**Off street**

Off road parking to rear of property.

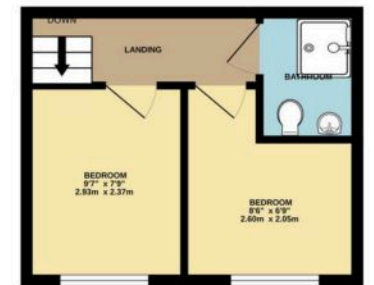




GROUND FLOOR



1ST FLOOR



Whilst every attempt has been made to ensure the accuracy of the floorplan contained here, measurements of doors, windows, rooms and any other items are approximate and no responsibility is taken for any error, omission or mis-statement. This plan is for illustrative purposes only and should be used as such by any prospective purchaser. The services, systems and appliances shown have not been tested and no guarantee as to their operability or efficiency can be given.  
Made with Metropix ©2025



## Victoria Estates & Property Management

49a Liverpool Road North, Burscough - L40 0SA

01704 897647 • victoria@vepm.co.uk • <http://vepm.co.uk>



VICTORIA ESTATES  
&  
PROPERTY MANAGEMENT