



Maple Avenue, Burscough

Located in a sought after Cul De Sac, this Semi Detached property is available to the open market. The property briefly comprises, hallway, lounge, dining, kitchen on the ground floor and three bedrooms and bathroom on the 1st floor. The property benefits from front, rear gardens, private driveway and detached garage. Marketed with No Onwards Chain this property is a must view.

Council Tax band: C

Tenure: Freehold

- Semi Detached House
- Open Plan Lounge Dining
- Front & Rear Gardens
- Cul De Sac Location
- Within Walking Distance To Village Amenities
- Detached Garage & Private Driveway
- NO ONWARDS CHAIN



Entrance Hall

Front door into porch with door into hallway. Doors leading to lounge, dining and kitchen. Understairs storage and stairs to 1st floor. Window to side.

Lounge

11' 11" x 11' 7" (3.63m x 3.52m)

Bay window to front, fireplace and archway leading into dining.

Dining Room

10' 3" x 11' 5" (3.13m x 3.48m)

French doors leading to rear garden. Open plan into lounge.

Kitchen

7' 11" x 9' 8" (2.41m x 2.95m)

A good range of eye and low level units incorporating a stainless steel sink and drainer unit. Plumber in for dishwasher and washing machine. Understairs storage. Window to rear and door leading to side driveway.

Landing

Window to side. Doors leading to all three bedrooms and bathroom.

Bedroom One

11' 3" x 14' 0" (3.44m x 4.26m)

Bay window to front and fitted wardrobes.

Bedroom Two

10' 4" x 8' 2" (3.15m x 2.48m)

Window to rear.

Bedroom Three

7' 0" x 8' 8" (2.13m x 2.63m)

Window to front and built in wardrobe.



Bathroom

7' 11" x 7' 11" (2.41m x 2.41m)

Three piece suite comprising of panelled bath with electric shower over, pedestal wash hand basin and low level WC. Storage cupboard with boiler in and loft access. Two windows to side.

Garage

9' 9" x 18' 10" (2.96m x 5.74m)

Detached garage with up and over door with electrics and water in.

Garden

Enclosed rear garden. Well established borders and lawned area. Pathway from front to rear with gravelled areas.

Front Garden

Front lawn with planted out borders, great sized driveway leading all the way to garage door.

DRIVEWAY

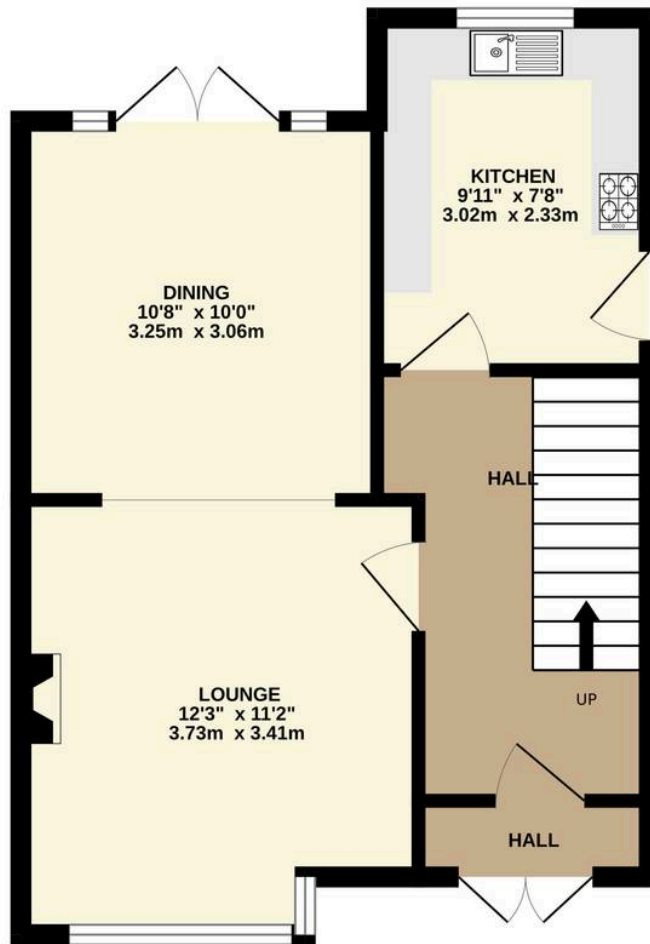
4 Parking Spaces

Private driveway with spaces for multiple cars.

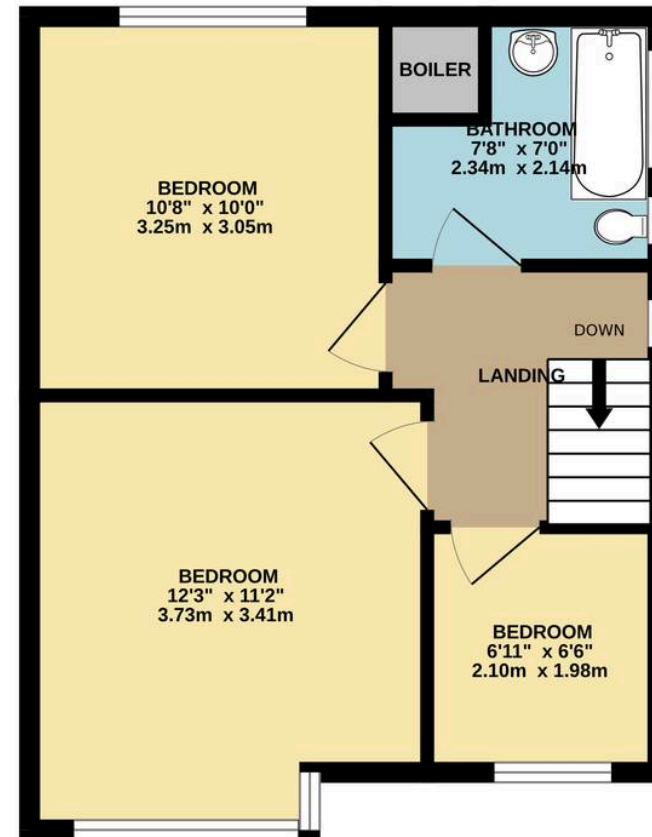




GROUND FLOOR



1ST FLOOR





Victoria Estates & Property Management

49a Liverpool Road North, Burscough - L40 0SA

01704 897647 • victoria@vepm.co.uk • <http://vepm.co.uk>



VICTORIA ESTATES
&
PROPERTY MANAGEMENT