



Apartments, Earls Grange, Burscough, Lancashire

Prices From £220,000

Now available are these 1 and 2 bedroom apartments. Situated in Burscough these well designed, modern apartments are not to be missed.

The apartments have various features ranging from walk out balconies, Juliet balconies, patios or terraces. They all come with: fully-fitted kitchens with integrated appliances, master bedrooms with walk in wardrobes or fitted wardrobes and 24-hour emergency call system, fire detection and door camera entry, so you can see who it is before answering the door.

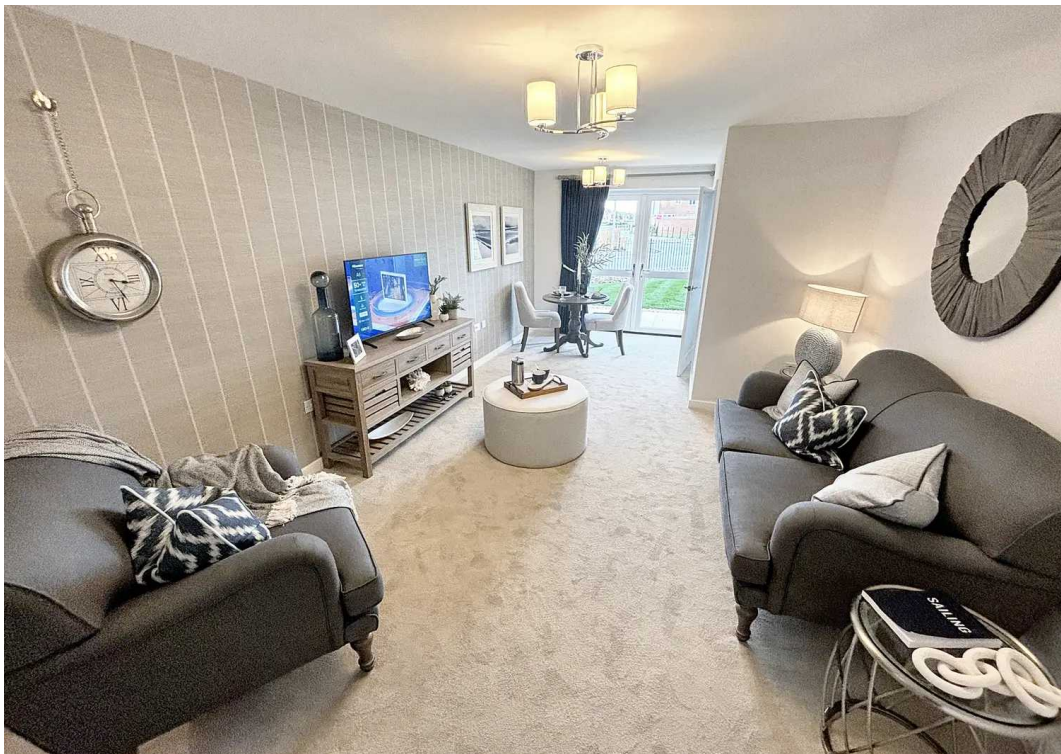
In Addition to your apartment there is also a hotel-style guest suite for friends and family to use along with communal lounges for you all to use for either everyday socialising or events.

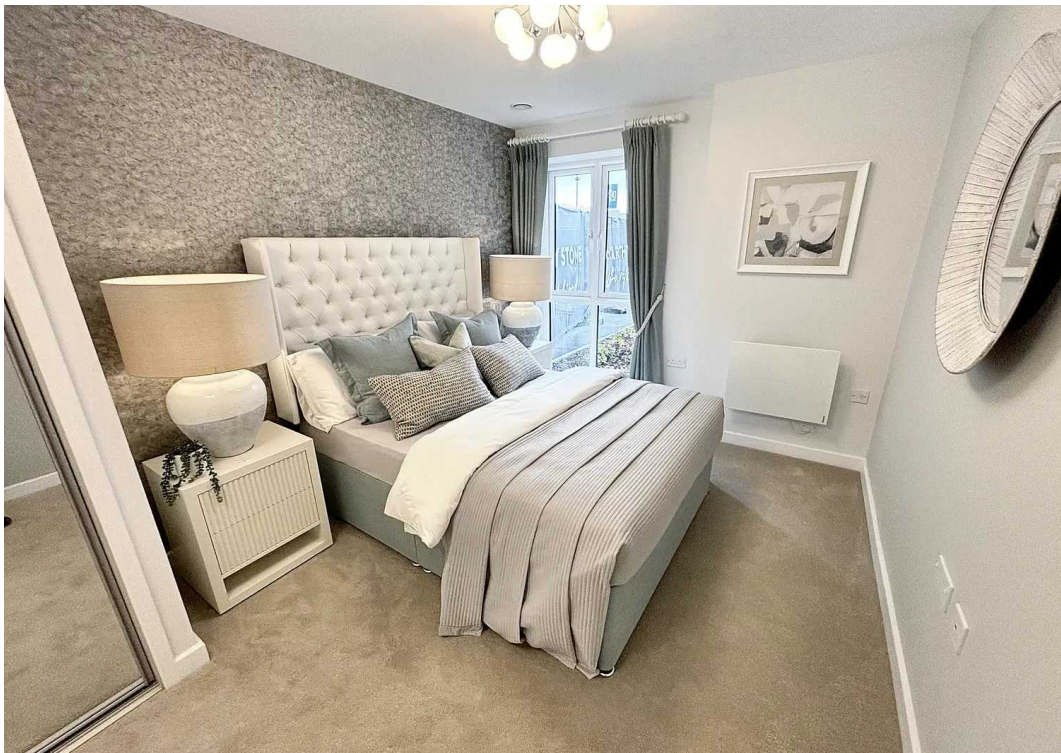
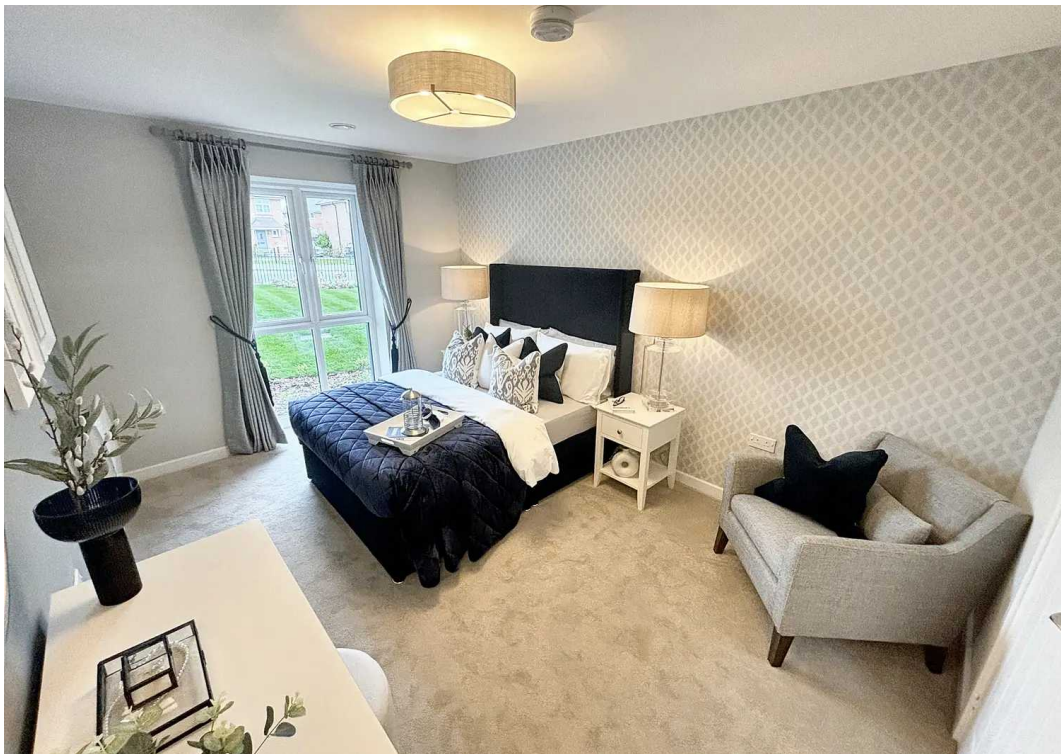
Book your visit now, call us on 01704 897647

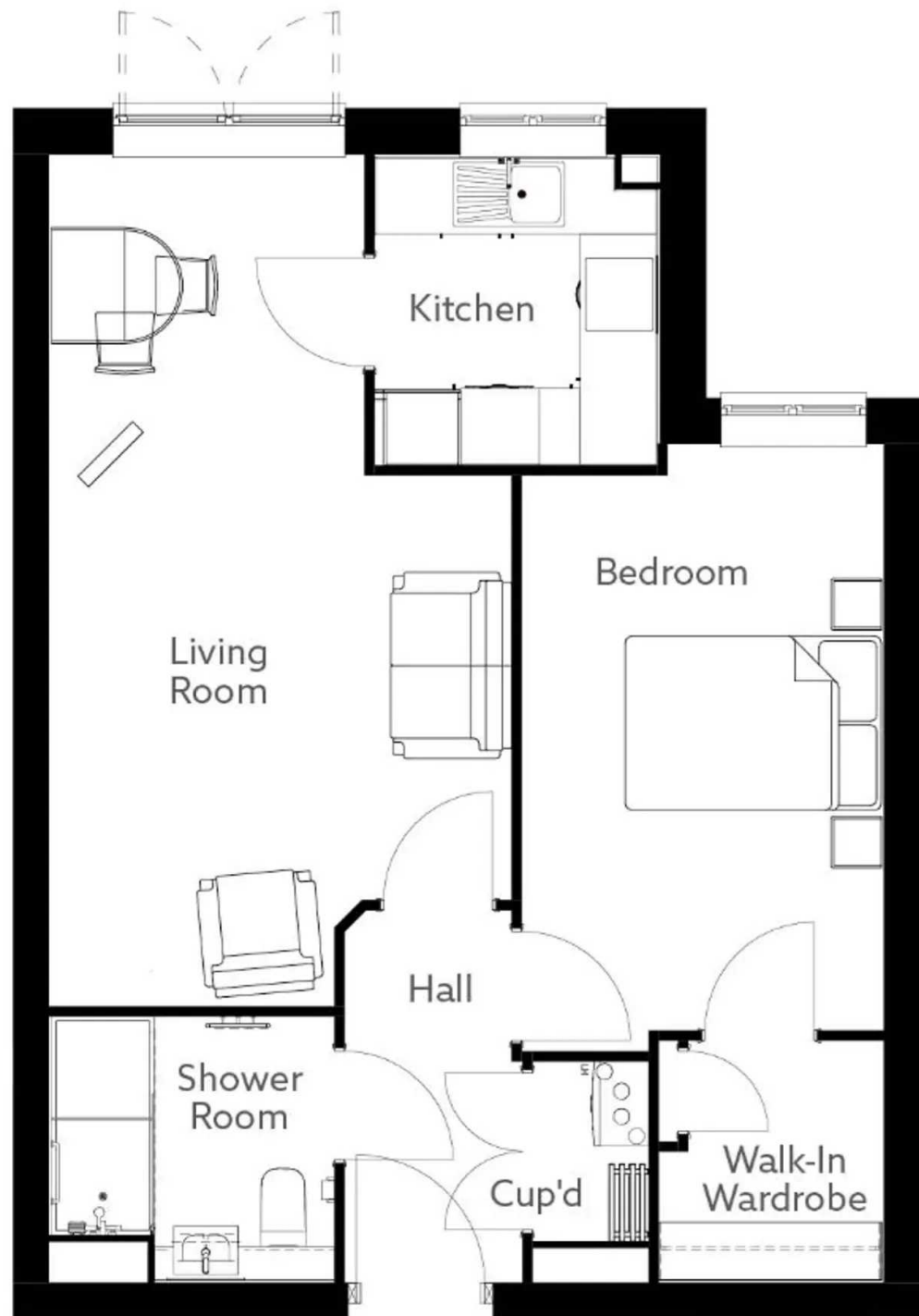
Tenure: Leasehold

- Luxury Apartments
- 1 & 2 Bedroom Apartments
- Over 55's
- House Manager
- Camera Entry System
- Communal Lounges
- Guest Suite For Family & Friends
- Communal Gardens













Victoria Estates & Property Management

49a Liverpool Road North, Burscough - L40 0SA

01704 897647 • victoria@vepm.co.uk • <http://vepm.co.uk>

