



1 Platts Lane, Burscough
£875 Per Calendar Month

Platts Lane

Two bedroom end terrace available now. The property has recently had a newly fitted kitchen, utility, new carpets/flooring and has been decorated throughout. Comprising of lounge, dining, kitchen, WC, two bedrooms and four piece bathroom. The property also benefits from front and rear gardens.

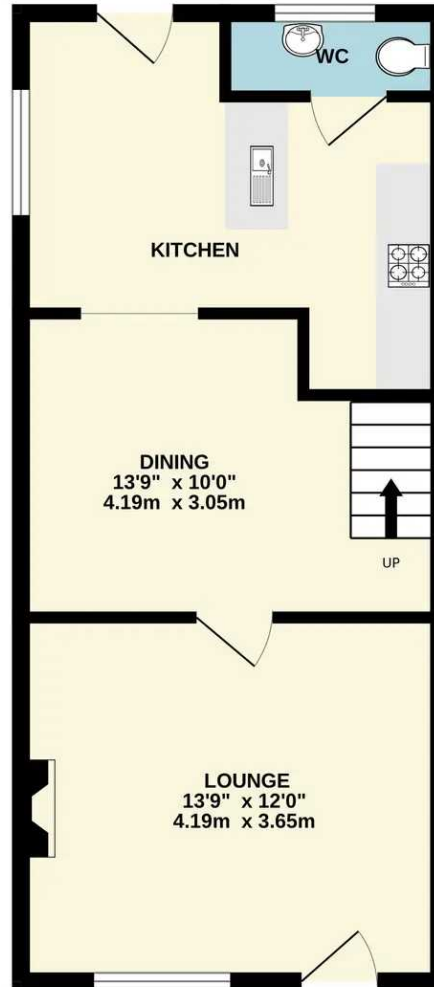
If the Landlord is willing to accept pets, then the monthly rent will be an additional £50pcm. Available immediately.

Victoria Estates politely ask you to contact the office before viewing internally or externally.

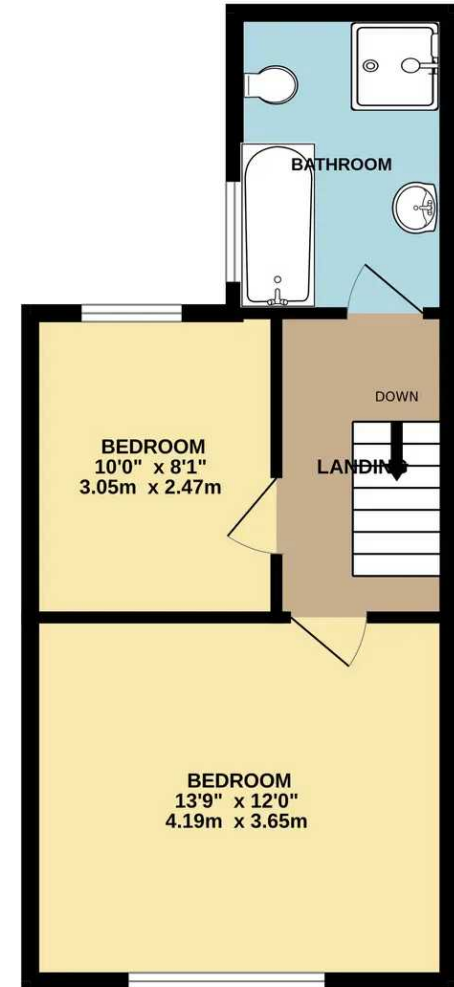
Council Tax band: A

- AVAILABLE NOW!
- End Terrace House
- Two Bedrooms
- Two Receptions
- New Kitchen
- Recently Decorated
- Bathroom & WC
- Rear Garden - Undergoing Work

GROUND FLOOR



1ST FLOOR



Lounge

14' 1" x 11' 10" (4.28m x 3.60m)

Front door into lounge with window to front. Electric fireplace and door into dining.

Dining Room

10' 6" x 10' 0" (3.20m x 3.04m)

Understairs storage, door into kitchen and stairs to 1st floor.

Kitchen

13' 7" x 10' 9" (4.15m x 3.27m)

An excellent range of eye and low level units incorporating a stainless and steel sink and drainer unit, built in electric hob with canopy style extractor hood built over and built in electric oven. Space for fridge freezer. Doors leading to utility/WC (plumbed for washing machine), rear garden and windows to side. Sky light.

Landing

Doors to two bedrooms and bathroom.

Bedroom One

12' 0" x 14' 0" (3.65m x 4.27m)

Window to front.

Bedroom Two

9' 11" x 8' 6" (3.02m x 2.60m)

Window to rear.

Bathroom

10' 7" x 6' 1" (3.23m x 1.85m)

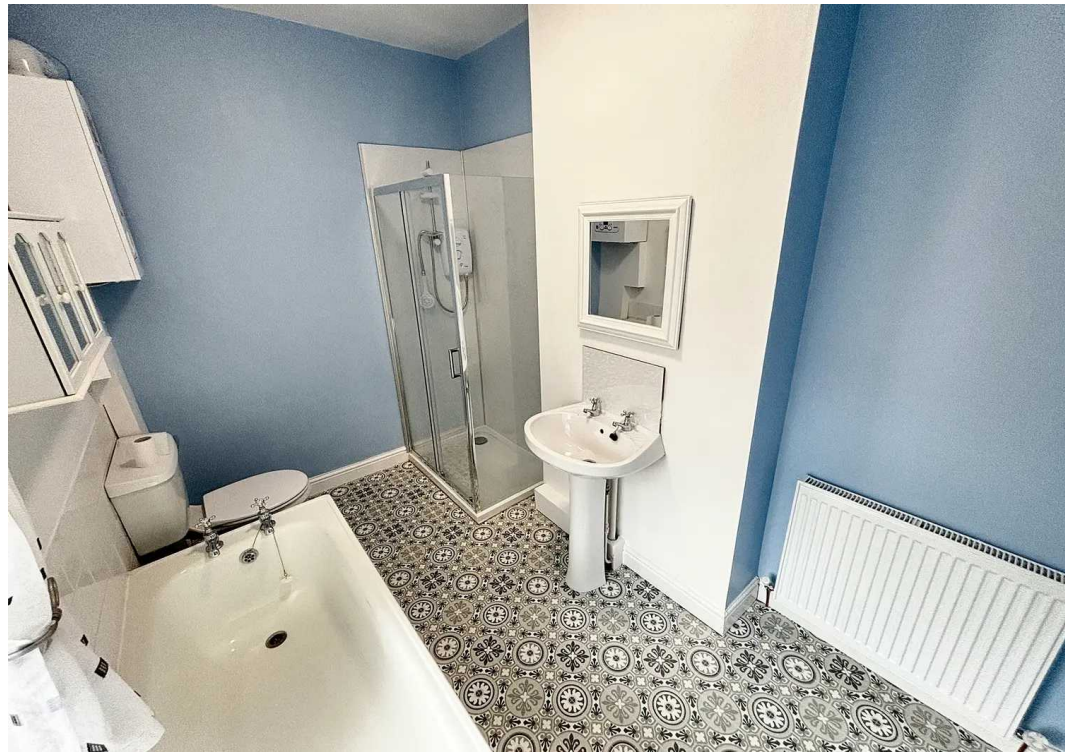
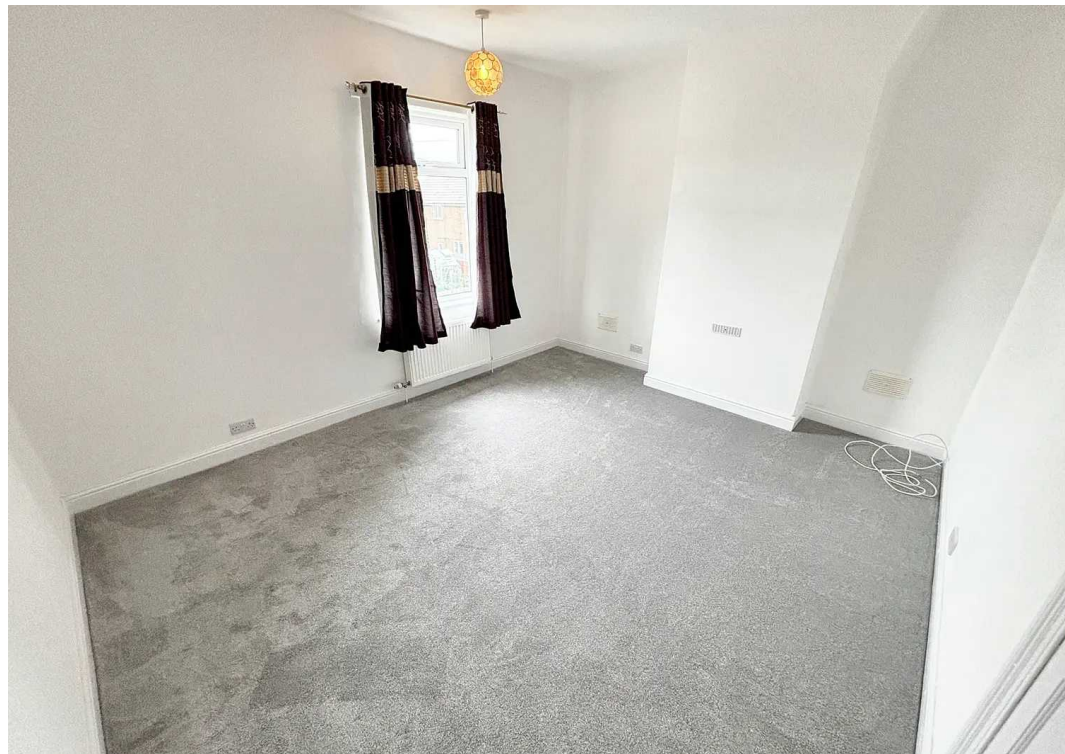
Four piece suite comprising panelled bath, double shower cubicle, pedestal wash basin and low level WC. Partly tiled walls. Window to side. Boiler in corner.

Front Garden & Rear Garden

Pathway to front with small lawned garden.

Right of way to side. Enclosed rear garden - Garden is currently undergoing work but will be ready before move in.







Victoria Estates & Property Management

49a Liverpool Road North, Burscough - L40 0SA

01704 897647 • victoria@vepm.co.uk • <http://vepm.co.uk>

